

Series **DX2R**

ISO#2 Interface Regulator



- SANDWICH REGULATOR FOR DX2 VALVE (ISO#2)
- LIGHT WEIGHT (760 g) & COMPACT DESIGN (HEIGHT 53mm)
- HANDLE POSITION IS THE SAME FOR ALL OPTIONS
- SINGLE SOLENOID VALVE HAS HANDLE AND GAUGE ON THE SAME SIDE (OPTIONAL)

DV1000 ·
3000 · 4000

DV2000

DS2000

DS3000

DS5000

DS6000

DX2

DV100

DS300

DW

DP300 ·
3000 · 5000

DM

DH

How to Order

DX2R — **P** — **C**

1
2
3

1 Sandwich Regulator (ISO #2)

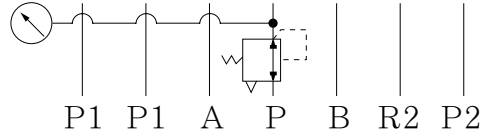
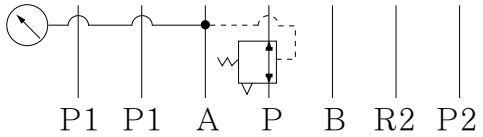
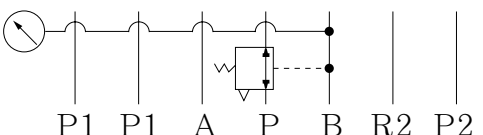
2 Regulation Port

P : P port regulation
A : A port regulation
B : B port regulation

3 Gauge Type

Blank : Radial Type Gauge
C : Cylindrical Gauge Type (Single Only)

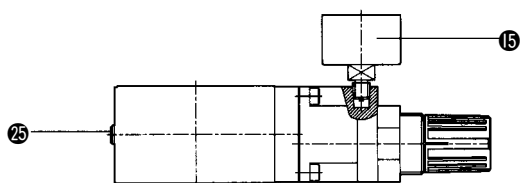
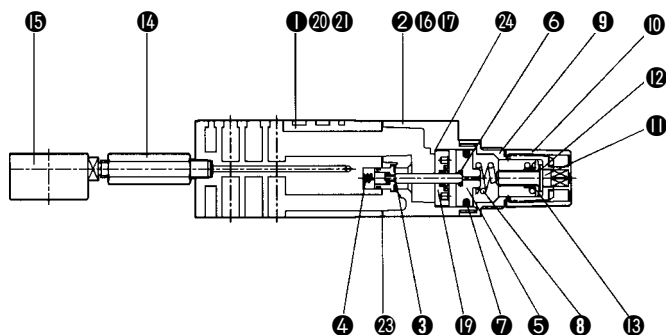
Symbol

Model	Regulation Port	Pressure Gauge Port Size	Pressure Governor	Symbol
DX2R-P	P port regulation	Rc (PT) 1/8	Relieving Type	
DX2R-A	A port regulation			
DX2R-B	B port regulation			

Series DX2R / Specifications

Proof Pressure	15.3kgf/cm ² (1.5 MPa)			
Max. Operating Pressure	10.2kgf/cm ² (1.0 MPa)			
Set Pressure Range	1.0~8.5kgf/cm ² (0.1~0.83 MPa)			
Pressure Gauge Port Size	Rc(PT) 1/8			
Ambient and Fluid Temperature	5~60℃			
Pressure Governor	Relieving Type			
		P Pressure Reducing	A Pressure Reducing	B Pressure Reducing
Air Supply Side Eff. Area(mm ²) (Cv)	P → A	27 mm ² (1.5)	30 mm ² (1.7)	27 mm ² (1.5)
	P → A	27 mm ² (1.5)	30 mm ² (1.5)	27 mm ² (1.5)
Air Exhaust Side Eff. Area(mm ²) (Cv)	A → R1	60 mm ² (3.3)		
	B → R2	36 mm ² (2.0)		

Construction/Component



Cylindrical Gauge Type

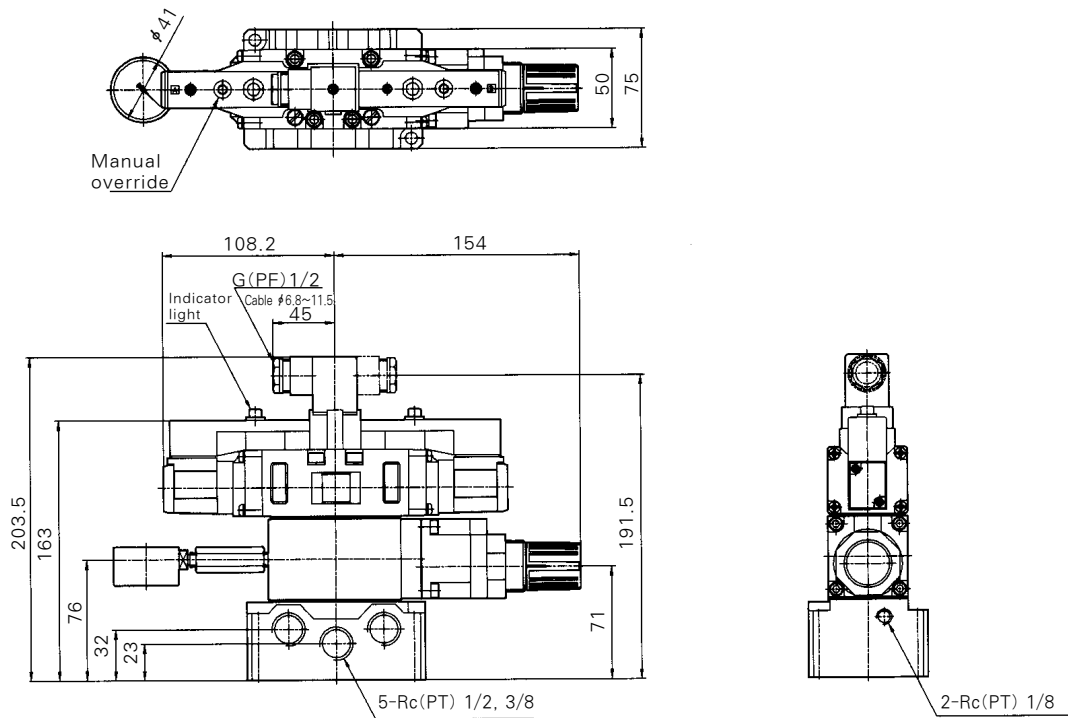
Component Parts

NO	Description	Material	Note
①	Body	Aluminum Die Casting	
②	Chamber	Aluminum Die Casting	
③	Valve Ass'y	Aluminum Die Casting	
④	Valve Spring		
⑤	Piston		
⑥	Piston Gasket		
⑦	Piston Packing	NBR	
⑧	Adjusting Spring	NBR	
⑨	Bonnet	SWP	
⑩	Handle	Poly Amide	
⑪	Adjusting Bolt	Poly Acetal	
⑫	Lining		
⑬	Adjusting Nut		
⑭	Nipple		
⑮	Pressure Gauge		
⑯	Steel Ball		
⑰	Bolt		
⑱	Mounting Bolt		
⑲	Chamber Plate Ass'y		
⑳	Symbol Plate	TETRON	
㉑	Name Plate	TETRON	
㉒	Manifold Gasket	NBR	
㉓	Chamber Gasket	NBR	
㉔	Chamber Plate Gasket	NBR	
㉕	Pressure Plug		

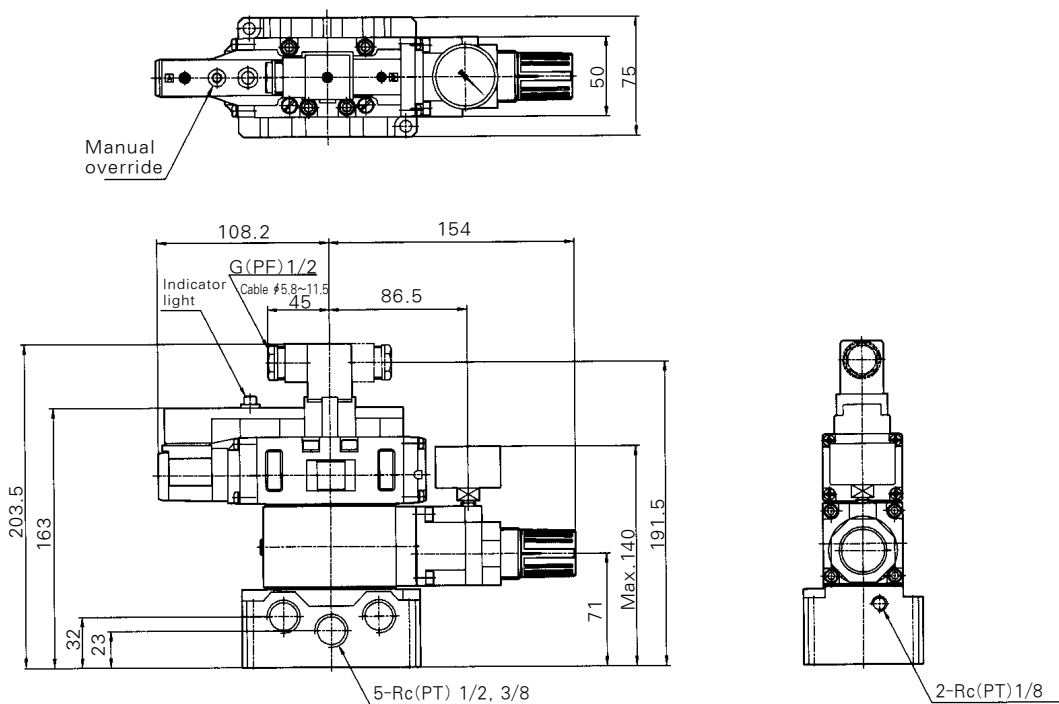
Interface Regulator/Dimensions

(mm)

DX2R-P (A,B)



DX2R-P (A,B)-C
 (Only Single Type Sol' Valve)



DV1000 ·
3000 · 4000

DV2000

DS2000

DS3000

DS5000

DS6000

DX2

DV100

DS300

DW

DP300 ·
3000 · 5000

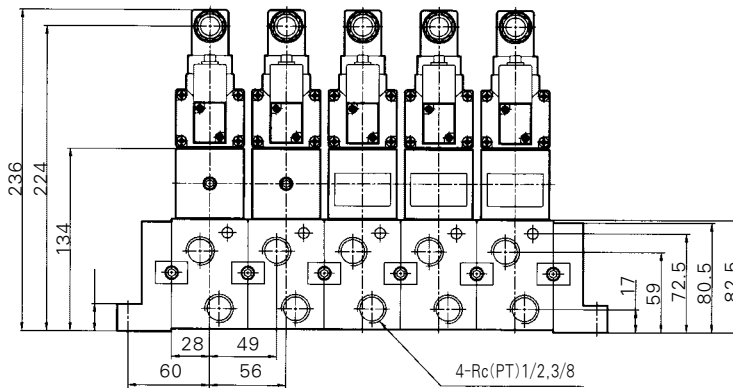
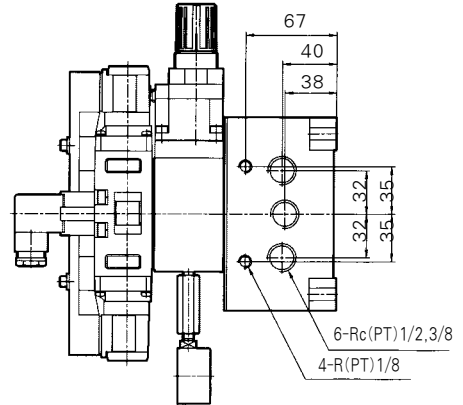
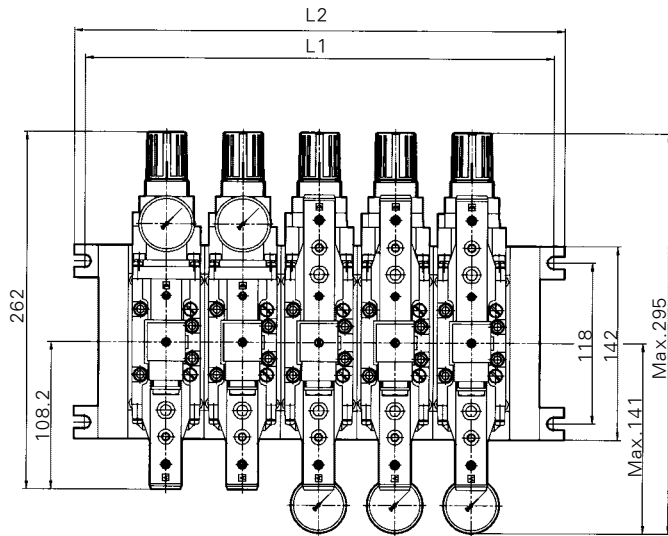
DM

DH

Series DX2R

ManifoldDX2M/Dimensions

(mm)



Size	Stations	1	2	3	4	5	6	7	8	9	10	Equation(mm)
	Symbol											
Rc(PT)1/2	L ₁	120	176	232	288	344	400	456	512	568	624	n: Stations L ₁ =56n+64 L ₂ =56n+80
	L ₂	136	192	248	304	360	416	472	528	584	640	

