

Series DX2

ISO #2 Interface solenoid valve



- BUILT-IN SPEED CONTROLLER (OPTIONAL)
- INDIVIDUAL PILOT EXHAUST TYPE
- EFFECTIVE ORIFICE: 62mm² (3.4Cv)
- BUILT-IN LED
- SURGE SUPPRESSION OPTION

DV1000 ·
3000 · 4000

DV2000

DS2000

DS3000

DS5000

DS6000

DX2

DV100

DS300

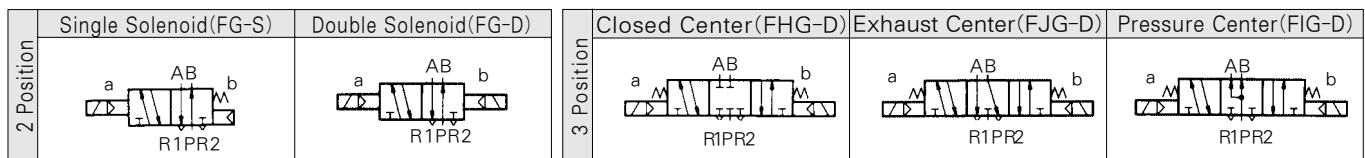
DW

DP300 ·
3000 · 5000

DM

DH

Symbol



How to Order

DX2 — **FG-S** — **1** **N** **U** **A03**

1
2
3
4
5
6
7
8

1 ISO#2 Type Valve

2 Type of Actuation

- FG-S : 2 Position Single
- FG-D : 2 Position Double
- FHG-D : 3 Position Closed Center
- FJG-D : 3 Position Exhaust Center
- FIG-D : 3 Position Pressure Center

3 Voltage

- 1 : AC100V, 50/60Hz
- 2 : AC200V, 50/60Hz
- 3 : DC24V

4 Indicator Light

- N : Indicator Light
- Z : With Indicator Light and Surge Voltage Suppressor

5 Speed Controller

- Blank : Without Speed Controller
- S : With Speed Controller

6 Cable Gasket

- Blank : φ 11
- P : φ 7

7 Thread

- Blank : Rc(PT)
- U : NPT

8 Port Size

- Blank : Valve Less Base
- A03 : 3/8
- A04 : 1/2

Standard Specifications

Fluid		Air	
Operating Pressure Range	2 Position Single, 3 Position	21~128 PSI{0.15~0.9 MPa}	
	2 Position Double	14~128 PSI{0.1~0.9 MPa}	
Ambient and Fluid Temperature		Max. 122°F	
Lubrication		Non-lube	
Manual Override		Non-locking Push Type	
Enclosure		IP 65	
Voltage		AC100V, 200V(50/60Hz), DC24V	
Voltage Consumption		-15%~+10% of Rated Voltage	
Power Consumption	AC	Inrush	5.6VA(50Hz), 5.0VA(60Hz)
		Holding	3.4VA(50Hz), 2.3VA(60Hz)
	DC		2W
Electrical Entry		DIN Connector	

* If Provided, use turbine oil(ISO VG32)

Model

Position/ Solenoid		Type	Effective Orifice in ² (Cv factor)	Max.Operating Rate ⁽¹⁾ cycles/sec	Response Time ⁽²⁾	Weigh ⁽³⁾ lbs
2Position	Single	DX2-FG-S-*	0.1(3.4)	5	0.05 Less	1.57
	Double	DX2-FG-D-*	0.1(3.4)	5	0.05 Less	1.87
3Position	Closed Center	DX2-FHG-D-*	0.09(3.0)	3	0.07 Less	1.87
	Exhaust Center	DX2-FJG-D-*	0.09(3.0)	3	0.07 Less	1.87
	Pressure Center	DX2-FIG-D-*	0.09(3.0)	3	0.07 Less	1.87

Note (1) Minimum Operating Cycle Rate : in accordance with B8375(1/30 days)

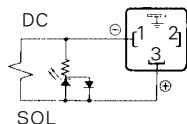
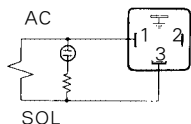
(2) In accordance with B8375-1975, at 71.1 PSI

(3) Weight Without sub-plate(sub-plate weight : 1.50lbs)

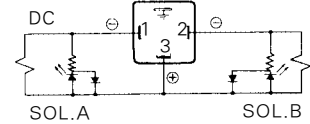
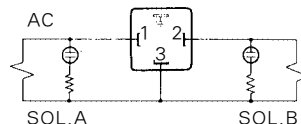
DIN Connector(Wiring)

● Indicator Light

Single

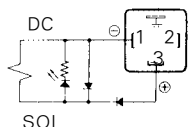
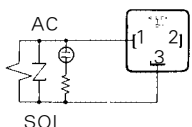


Double

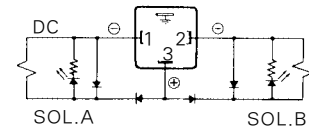
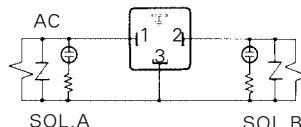


● Indicator light and Surge Voltage Suppressor

Single

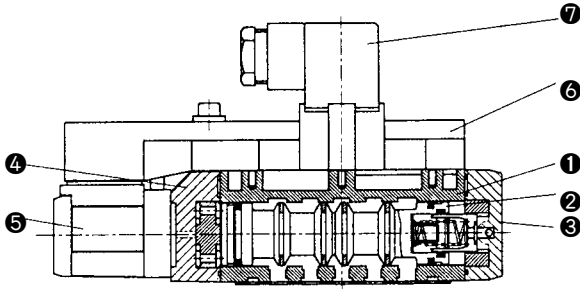


Double

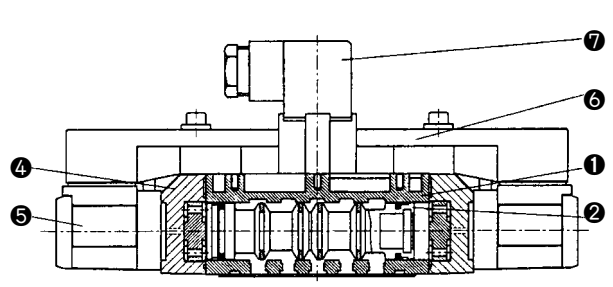


Construction

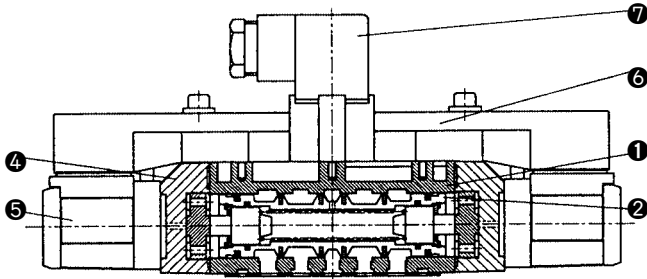
DX2-FG-S-※



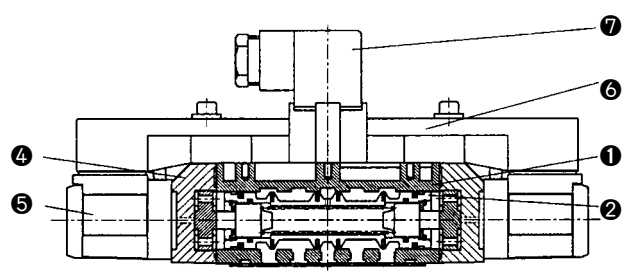
DX2-FG-D-※



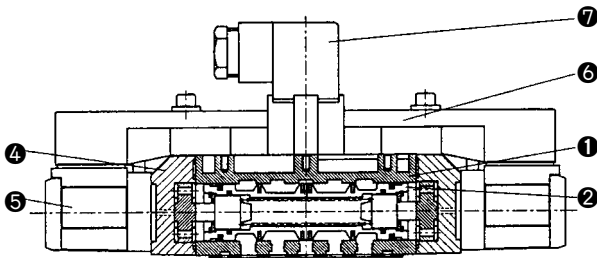
DX2-FHG-D-※



DX2-FJG-D-※



DX2-FIG-D-※



Main Parts

No.	Description	Material	Note
①	Body	Aluminum Die-Cast	
②	Spool	Aluminum + NBR	
③	End Cover	Aluminum Die-Cast	Black Paint
④	Adapter Plate	Aluminum Die-Cast	Black Paint
⑤	Pilot Valve Ass'y	-	
⑥	Lamp Case	Resin	
⑦	Connector	Resin	

DV1000 ·
3000 · 4000

DV2000

DS2000

DS3000

DS5000

DS6000

DX2

DV100

DS300

DW

DP300 ·
3000 · 5000

DM

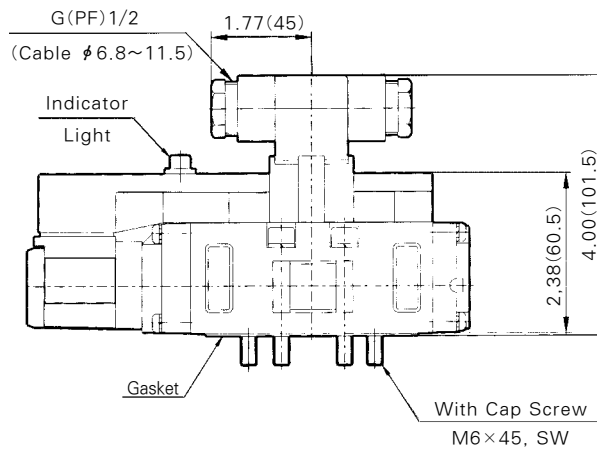
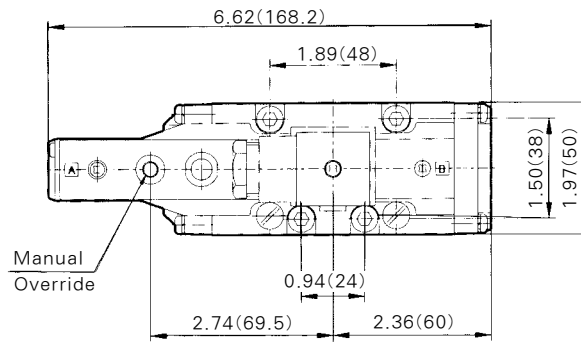
DH

Series DX2

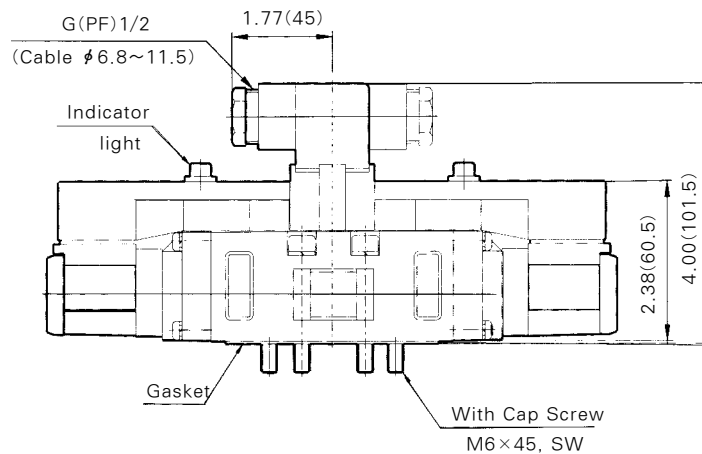
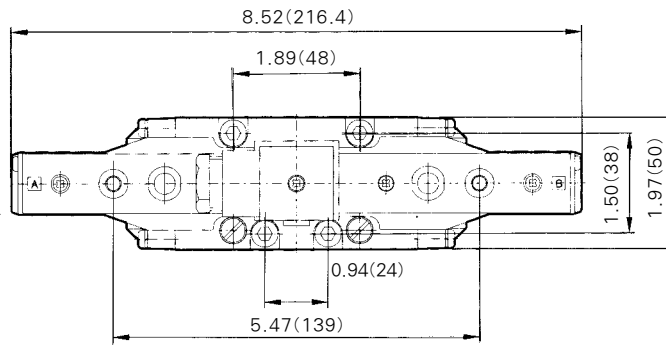
Dimensions

inch(mm)

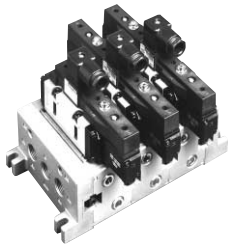
DX2-FG-S



DX2-FG-D
DX2-FHG-D
DX2-FJG-D
DX2-FIG-D



Sub-Base Series(DXM2)



Specifications

Applicable Solenoid Valve	ISO Size ②
Sub-Plate Size	ISO Size ②
Porting	Side : 3/8", 1/2"
Weight (lbs)	1.5 (3/8", 1/2")

DV1000 · 3000 · 4000

DV2000

DS2000

DS3000

DS5000

DS6000

DX2

DV100

DS300

DW

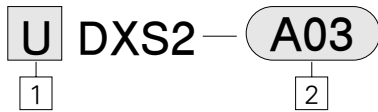
DP300 · 3000 · 5000

DM

DH

How to Order

Sub Base



1 Thread

Blank : RC(PT)
U : NPT

2 Porting

A03 : 3/8
A04 : 1/2

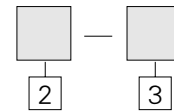
Manifold



1 Thread

Blank : RC(PT)
U : NPT

2 Porting A, B

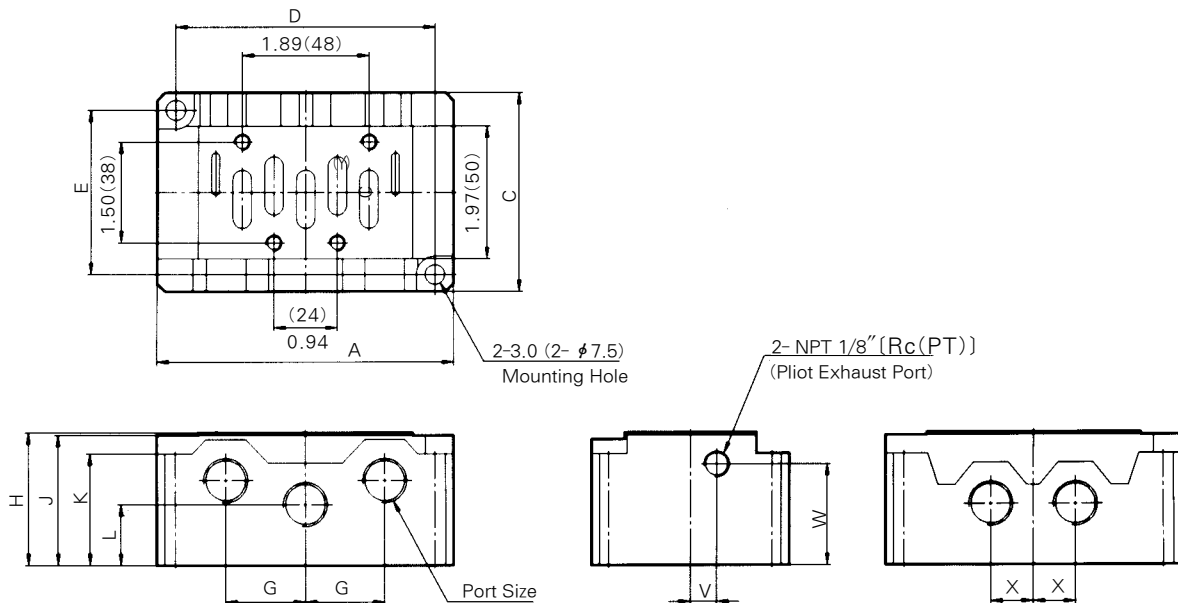


03R : 3/8
04R : 1/2

3 Porting P, R1, R2
04B : 1/2

Sub-Base Dimensions

inch(mm)



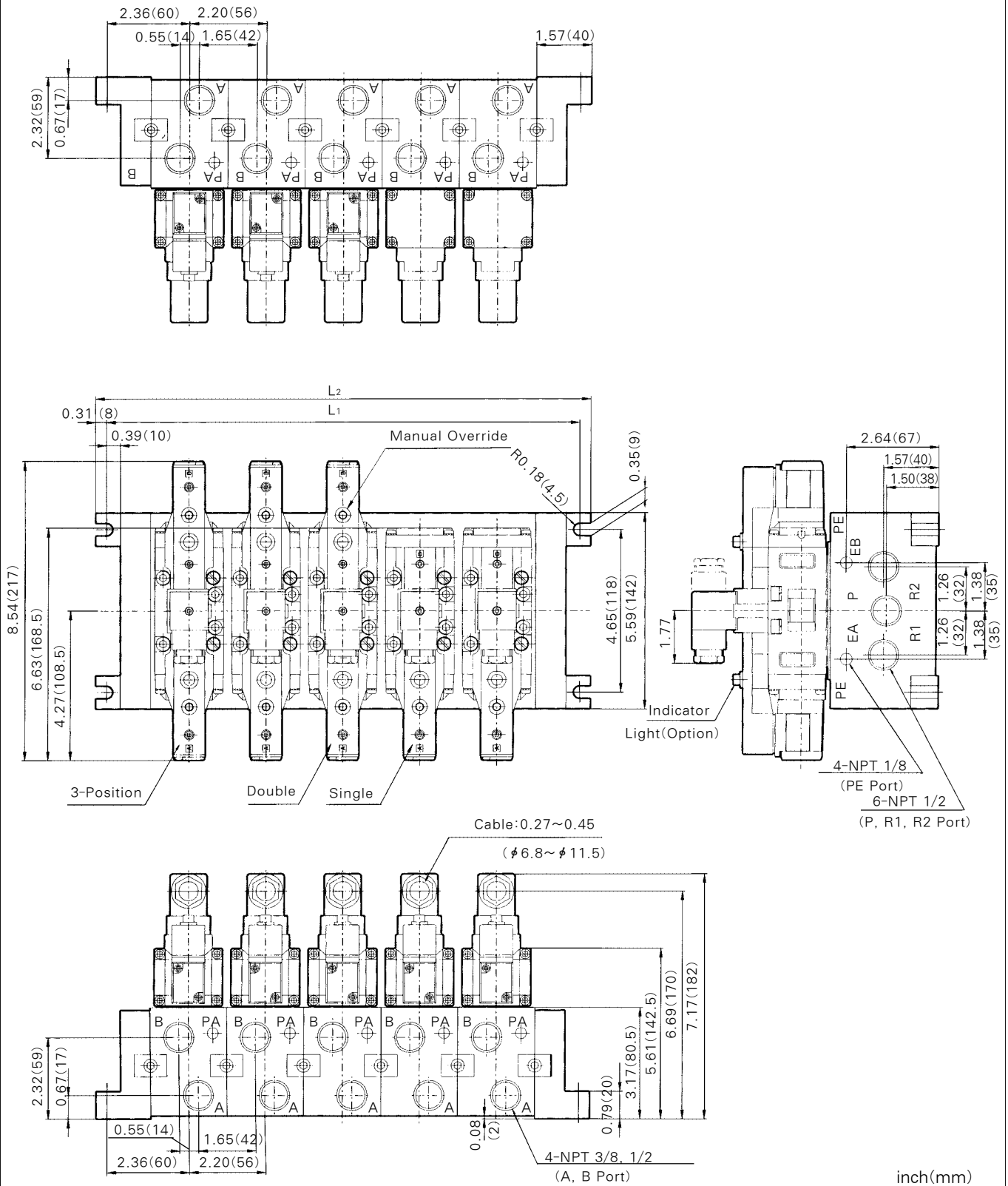
inch(mm)

Model	Port Size	A	C	D	E	F	G	H	K	L	V	W	X	Y
DXM2-2 A03, A04	Rc(PT) NPT 3/8" · 1/2"	4.41 (112)	2.95 (75)	3.86 (98)	2.44 (62)	4-M6Depth0.47 (4-M6 Depth12)	1.18 (30)	1.97 (50)	1.26 (32)	0.91 (23)	0.39 (10)	0.31 (38)	0.63 (16)	0.91 (23)

Series DX2

Manifold/Dimensions

inch(mm)



Size	Symbol	Stations										Equation(mm)
		1	2	3	4	5	6	7	8	9	10	
NPT 1/2"	L ₁	4.72(120)	6.93(176)	9.13(232)	11.34(288)	13.54(344)	15.75(2)	17.95(456)	20.16(512)	22.36(568)	24.57(624)	n: Stations L ₁ = 56n + 64 L ₂ = 56n + 80
	L ₂	5.35(136)	7.56(192)	9.76(248)	11.97(304)	14.17(360)	16.38(416)	18.58(472)	20.79(528)	22.99(584)	25.20(640)	