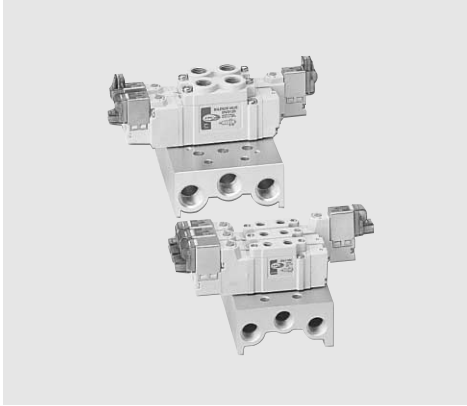


Series DV1000 · 3000 · 4000

5Port Pilot Solenoid Valve/Body Ported Type/Base Ported Type



- **Non-Polar Type Coil**
- **Quick response time & large flow capacity**
 - Response time of less than 12ms (Standard DV1000)
 - Increase in effective cross sectional area (It is increased approximately 2.5 times compared with the same level series from before)
 - Low power Consumption 1.0W (240V, 41mA)
- **High Reliability**
 - Long life
 - Wear Ring attached → The spool side prevents abrasion
 - Uses U Packing → Minimizes frictional resistance
 - In the case of restoration, select the Piston Return mode
- **Changing the exterior to a 'state of the art' design**
 - White color tone → changing the exterior to a 'state of the art' design
 - Elegant compact size and exterior
- **Product diversity**
 - Easy wiring with a basic nonpolar coil type
 - Prevents dust and noise during the pilot exhaustion with its exhaust collection system
 - Easy attachment of the gasket when putting it in the manifold (additional gasket protrusion figure)
 - Common use of the push & lock mode manually

DV1000 ·
3000 · 4000

DV2000

DS2000

DS3000

DS5000

DS6000

DX2

DV100

DS300

DW

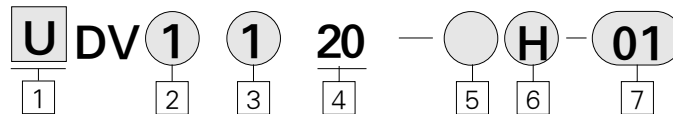
DP300 ·
3000 · 5000

DM

DH

How to order

Body Ported



- 1 Series**
Blank : Metric(PT)
U : UNF, NPT
- 2 Valve Series**
1 : DV1000 Series
3 : DV3000 Series
4 : DV4000 Series
- 3 Configuration**
1 : Single Solenoid
2 : Double Solenoid

- 3 : Closed Center
4 : Exhaust Center
5 : Pressure Center

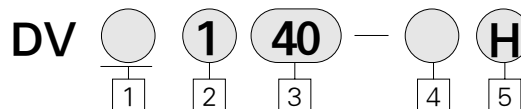
- 4 Manifold Specifications**
20 : Body Ported

- 5 Voltage**
1 : AC110V
5 : DC24V
6 : DC12V

- 6 Electrical Entry**
H : Horizontal
V : Vertical

- 7 Port Size**
M5 : M5×0.8
10 : 10-32UNF(Series DV1000)
01 : 1/8 (Series DV3000)
02 : 1/4 (Series DV4000)

Base Ported



- 1 Valve Series**
1 : DV1000 Series
3 : DV3000 Series
4 : DV4000 Series
- 2 Configuration**
1 : Single Solenoid
2 : Double Solenoid
3 : Closed Center

- 4 : Exhaust Center
5 : Pressure Center

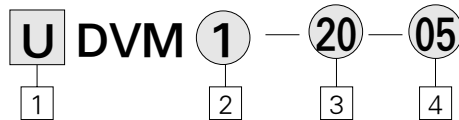
- 3 Manifold Specifications**
40 : Base Ported

- 4 Voltage**
1 : AC110V
5 : DC24V
6 : DC12V

- 5 Electrical Entry**
H : Horizontal
V : Vertical

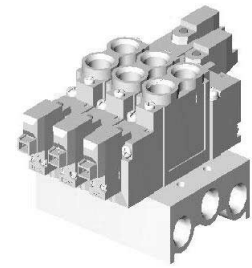
Series DV1000 · 3000 · 4000

Manifold

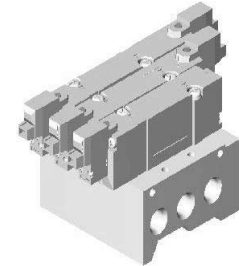


- 1 Series**
 Blank : Metric (PT)
 U : UNF, NPT
- 2 Applicable Valve**
 1 : DV1000 Series
 3 : DV3000 Series
 4 : DV4000 Series

- 3 Type**
 20 : Body Ported Type
 40 : Base Ported Type
- 4 Stations**
 02 : 2 Stations
 ...
 20 : 20 Stations

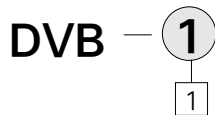


Body ported (DV ** 20)



Base Mounted (DV ** 40)

Blank Plate



- 1 Series**
 1 : For DV1000
 3 : For DV3000
 4 : For DV4000

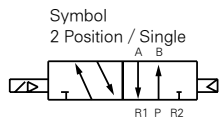
Specifications

Series	DV1000	DV3000	DV4000	
Acting	5 Port Pilot Type Solenoid Valve (Rubber Seal)			
Fluid	Air			
Operating Pressure Range	2 Position Single	0.15~0.7MPa (1.5~7.1kgf/cm ²)		
	2 Position Double	0.1~0.7MPa (1~7.1kgf/cm ²)		
	3 Position	0.2~0.7MPa (2~7.1kgf/cm ²)		
Ambient and Fluid Temperature	Max. 50℃			
Manual Override	Push & Lock Type			
Lubrication	Not Required			
Mounting Position	Free			
Impact/Vibration Resistance (m/s ²)	150/30 (8.3~2000Hz)			
Max. Operating Frequency	2 Position	10	5	
	3 Position	3	3	
Protection Structure (Enclosure)	Dust proof (DIN connector IP65)			
Lead Electrical Entry	Connector Mounting Type (H: Horizontal, V: Vertical)			
Voltage	DC12V, DC24V, AC110V			
Voltage Allowance	-10~+10% of Rated Voltage			
Polarity	Non-polar			
Response Time (ms)	5kgf/cm ²	~12ms	~18ms	~30ms
Power Consumption (W)	1.0 (Indicator Light and Surge suppressor)			
Effective Orifice	Single	3.6mm ² (Cv0.2)	9.0mm ² (Cv0.5)	16.2mm ² (Cv0.9)

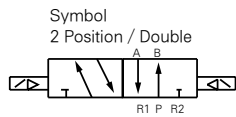
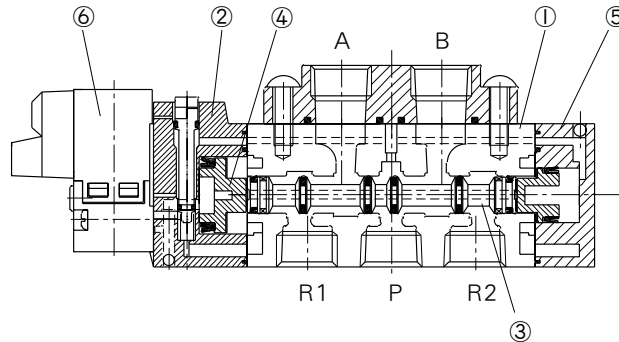
Series DV1000 · 3000 · 4000 Body Ported Type Effective Orifice and Response Time

Type	Configuration	Operating Pressure Range Mpa (psi)	Effective Orifice (mm ²) (Cv)	Response Time (ms)	
DV1000	2	Single	0.15~0.70 (20~100)	12 less than	
		Double	0.10~0.70 (14~100)	10 less than	
	3	Closed Center	0.20~0.70 (27~100)	3.3 (0.18)	16 less than
		Exhaust Center	0.20~0.70 (27~100)	3.3 (0.18)	16 less than
		Pressure Center	0.20~0.70 (27~100)	3.6 (0.20)	16 less than
DV3000	2	Single	0.15~0.70 (20~100)	18 less than	
		Double	0.10~0.70 (14~100)	9.0 (0.50)	18 less than
	3	Closed Center	0.20~0.70 (27~100)	7.2 (0.40)	32 less than
		Exhaust Center	0.20~0.70 (27~100)	7.2 (0.40)	32 less than
		Pressure Center	0.20~0.70 (27~100)	9.5 (0.53)	32 less than
DV4000	2	Single	0.15~0.70 (20~100)	30 less than	
		Double	0.10~0.70 (14~100)	16.2 (0.90)	30 less than
	3	Closed Center	0.20~0.70 (27~100)	10.8 (0.60)	50 less than
		Exhaust Center	0.20~0.70 (27~100)	10.8 (0.60)	50 less than
		Pressure Center	0.20~0.70 (27~100)	17.1 (0.96)	50 less than

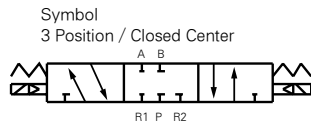
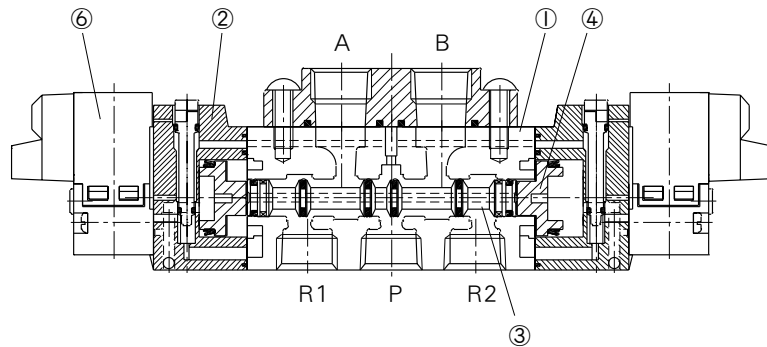
Construction / Body Ported



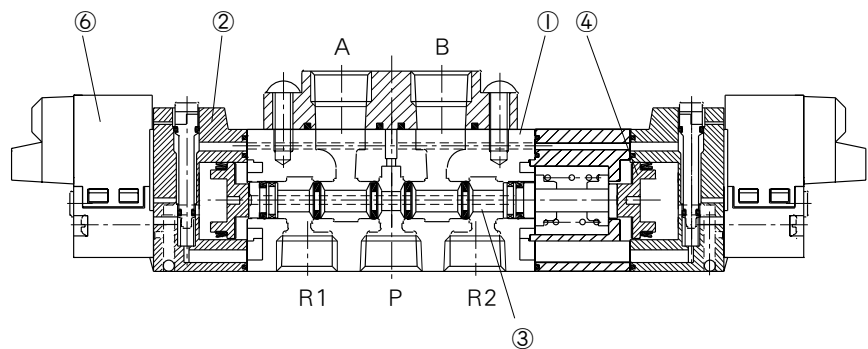
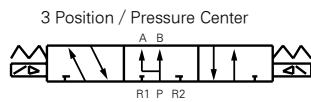
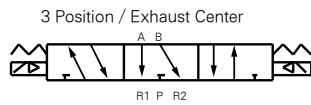
2 Position Single



2 Position Double



3 Position Closed Center / Exhaust Center / Pressure Center



Component Parts

No.	Description	Material
1	BODY	Aluminum Die Cast
2	ADAPTER PLATE	Resin
3	SPOOL	Aluminum
4	PISTON	Resin
5	END COVER	Resin
6	SOLENOID ASSY.	-

DV1000 · 3000 · 4000

DV2000

DS2000

DS3000

DS5000

DS6000

DX2

DV100

DS300

DW

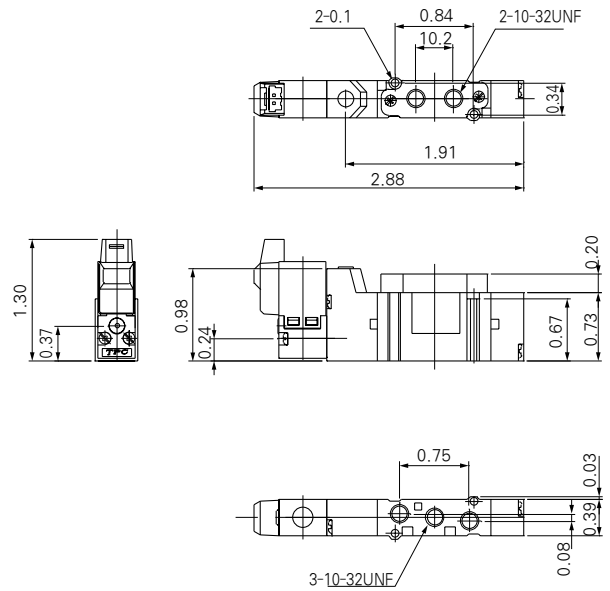
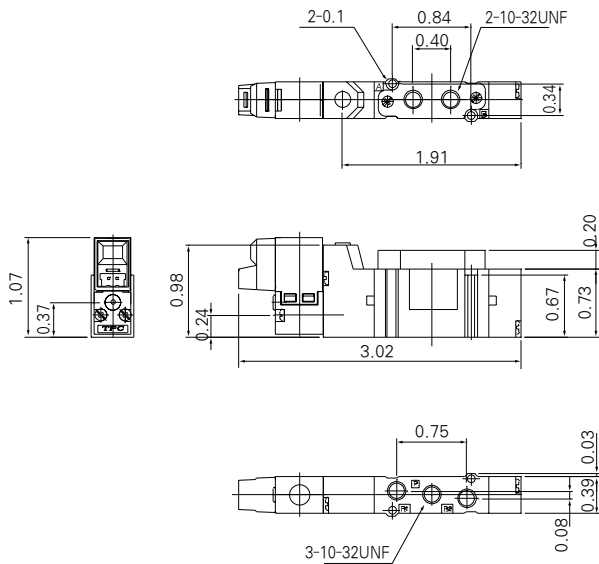
DP300 · 3000 · 5000

DM

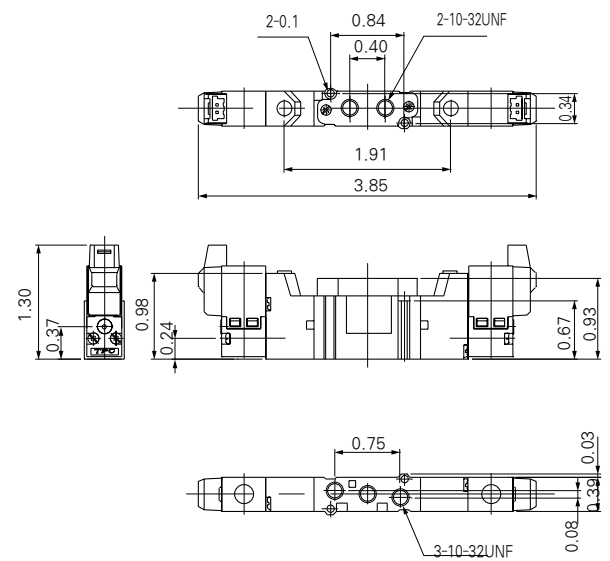
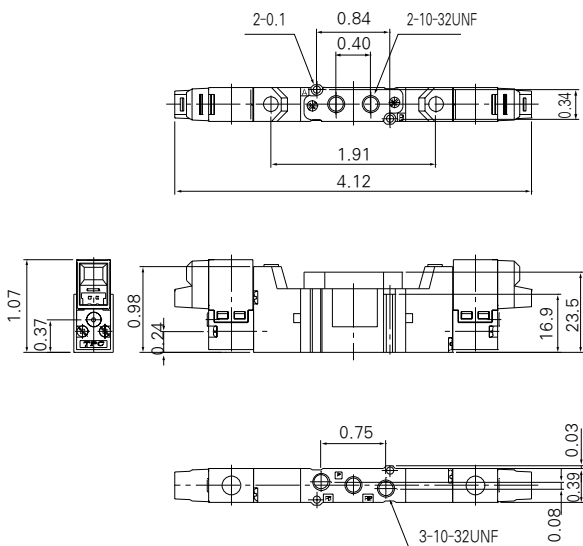
DH

Dimensions

DV1120 Single / Body Ported

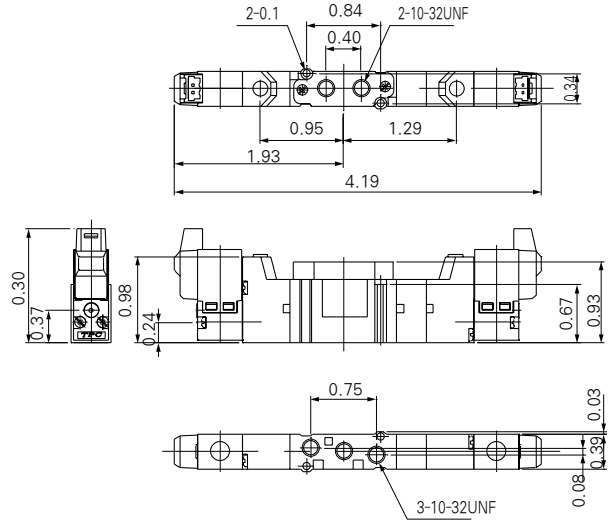
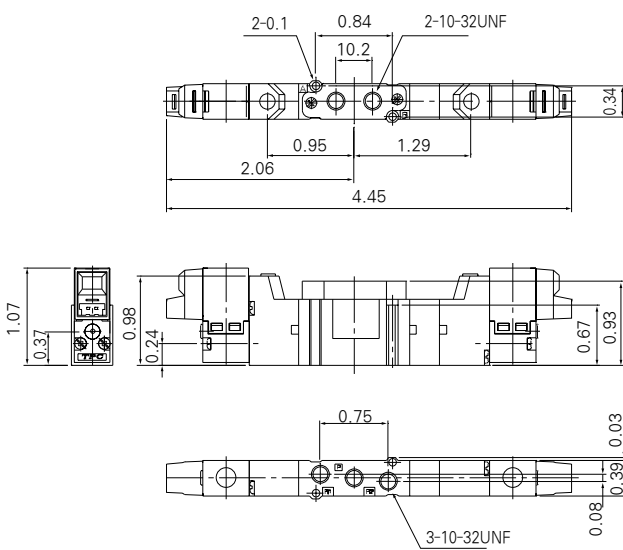


DV1220 Double / Body Ported

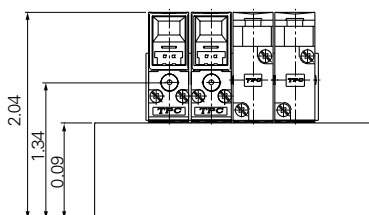
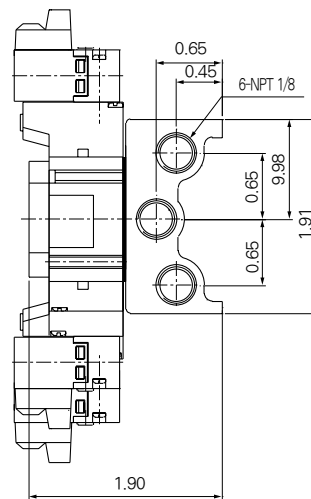
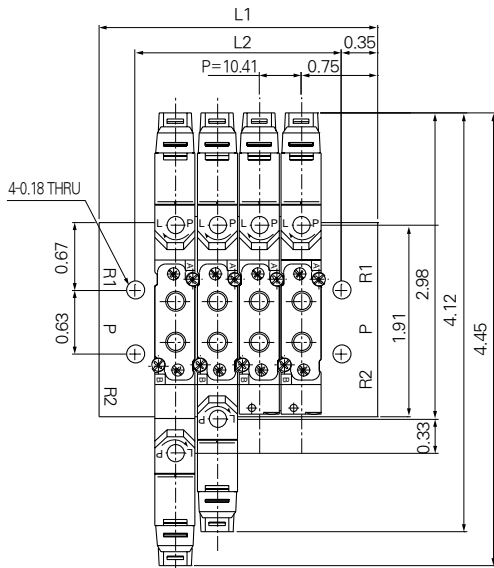


Dimensions

DV1320 3 Position / Body Ported



Dimensions / Series DVM1-20



	(mm)																			
Stations	2	3	4	5	6	7	8	9	10	11	12	13	14	15	16	17	18	19	20	
L1	1.91	2.32	2.74	3.15	3.56	3.98	4.39	4.80	5.22	5.63	6.04	6.46	6.87	7.28	7.70	8.11	8.52	8.94	9.35	
L2	1.20	1.61	2.03	2.44	2.85	3.27	3.68	4.09	4.51	4.92	5.33	5.75	6.16	6.57	6.99	7.40	7.81	8.23	8.64	

DV1000 · 3000 · 4000

DV2000

DS2000

DS3000

DS5000

DS6000

DX2

DV100

DS300

DW

DP300 · 3000 · 5000

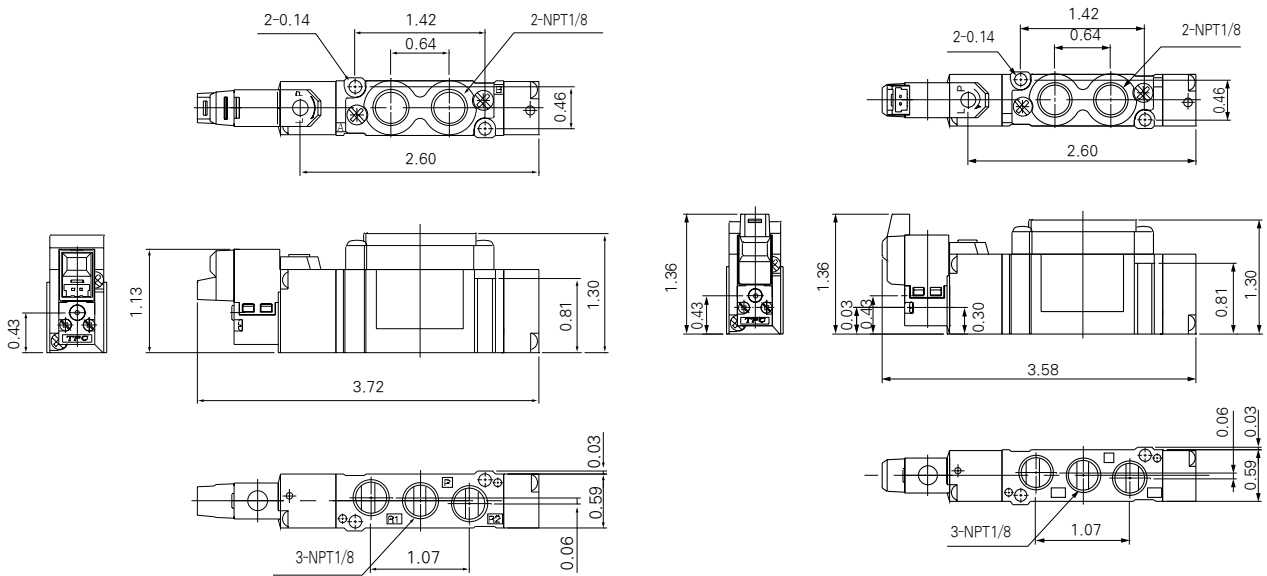
DM

DH

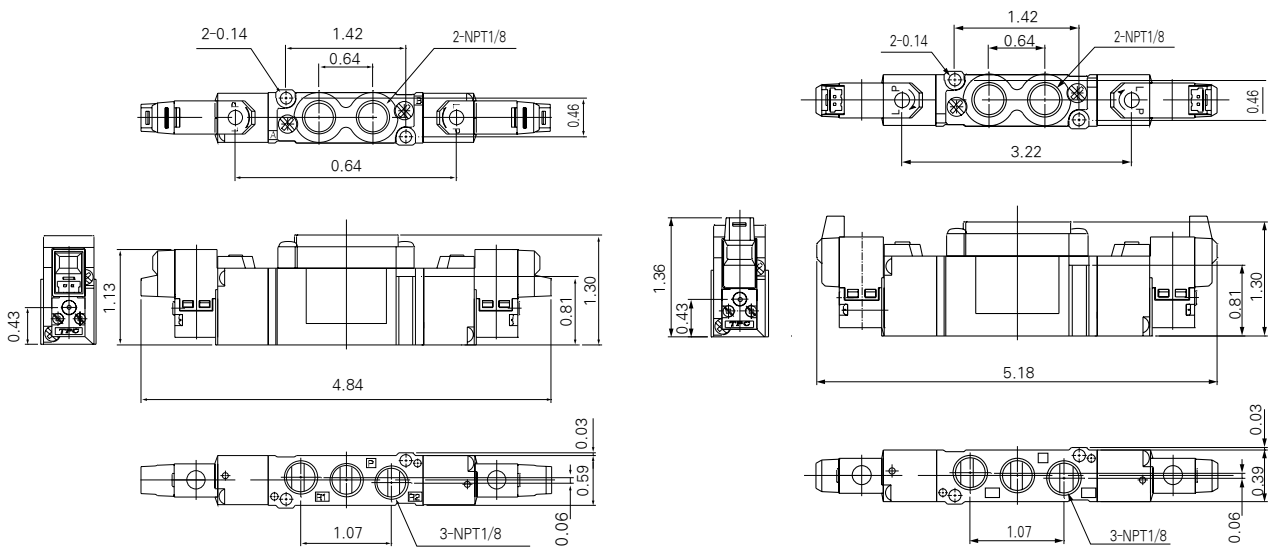
Series DV1000 · 3000 · 4000

Dimensions

DV3120 Single / Body Ported

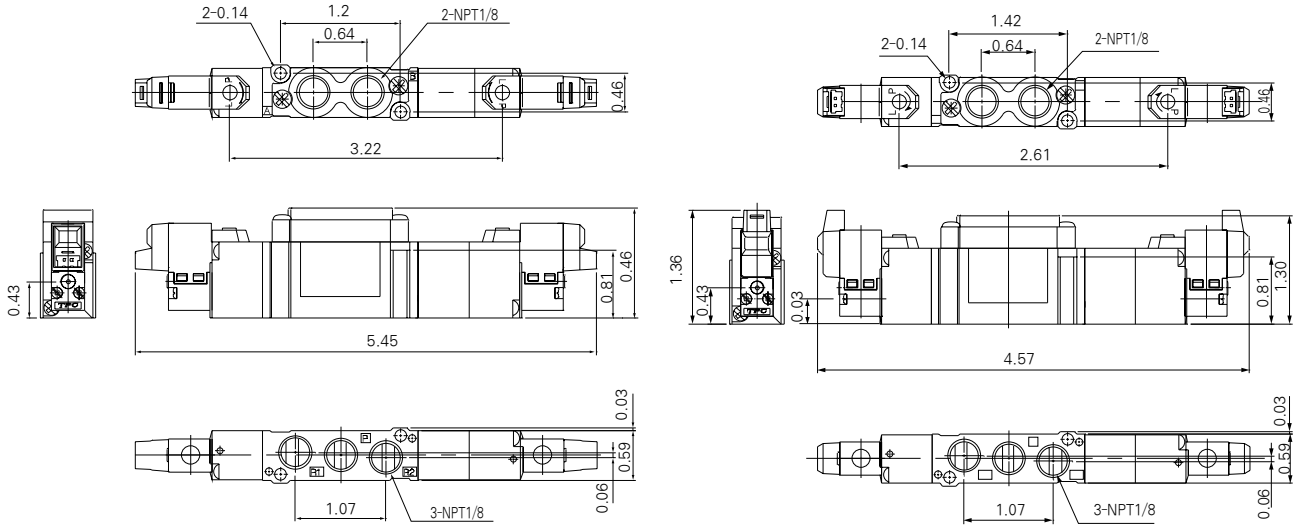


DV3220 Double / Body Ported

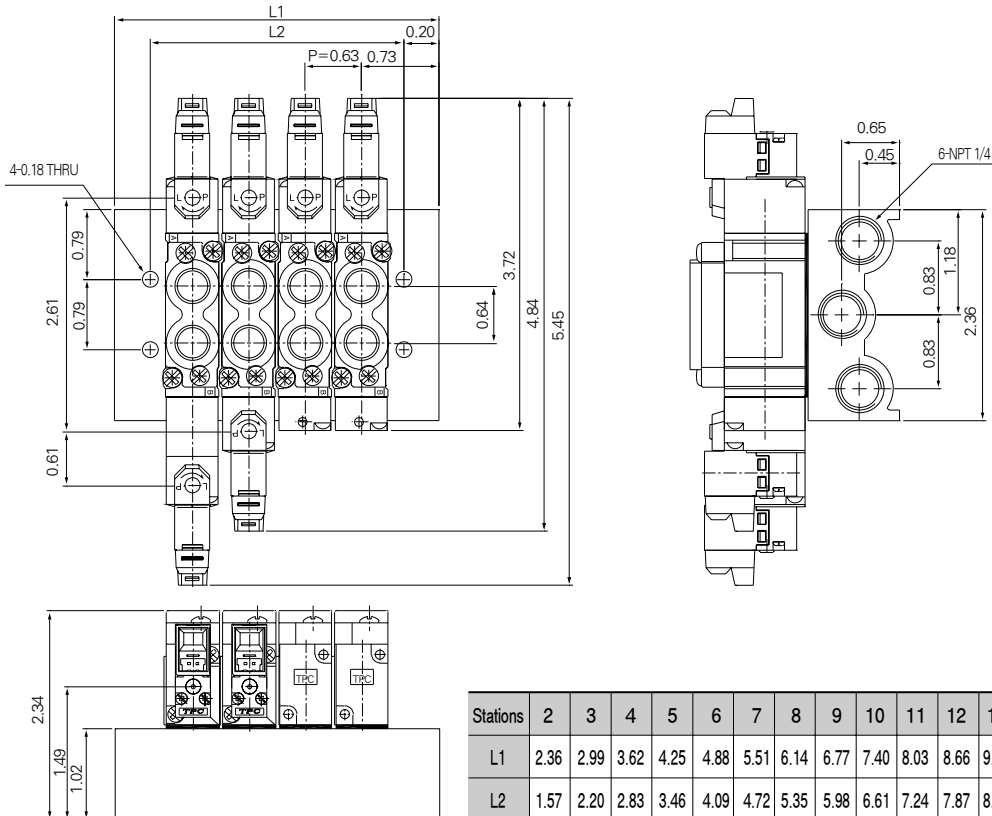


Dimensions

DV3320 3 Position / Body Ported



Dimensions / Series DVM3-20



Stations	2	3	4	5	6	7	8	9	10	11	12	13	14	15	16	17	18	19	20
L1	2.36	2.99	3.62	4.25	4.88	5.51	6.14	6.77	7.40	8.03	8.66	9.29	9.92	10.55	11.18	11.81	12.44	13.07	13.70
L2	1.57	2.20	2.83	3.46	4.09	4.72	5.35	5.98	6.61	7.24	7.87	8.50	9.13	9.76	10.39	11.02	11.65	12.28	12.91

(inch)

DV1000 · 3000 · 4000

DV2000

DS2000

DS3000

DS5000

DS6000

DX2

DV100

DS300

DW

DP300 · 3000 · 5000

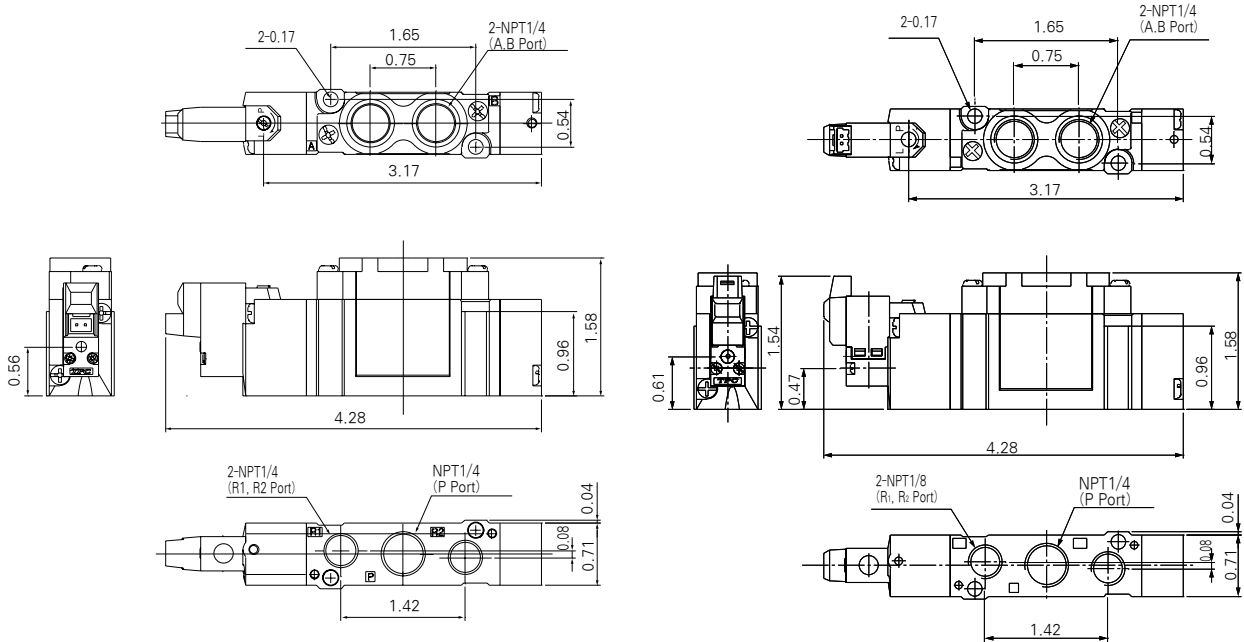
DM

DH

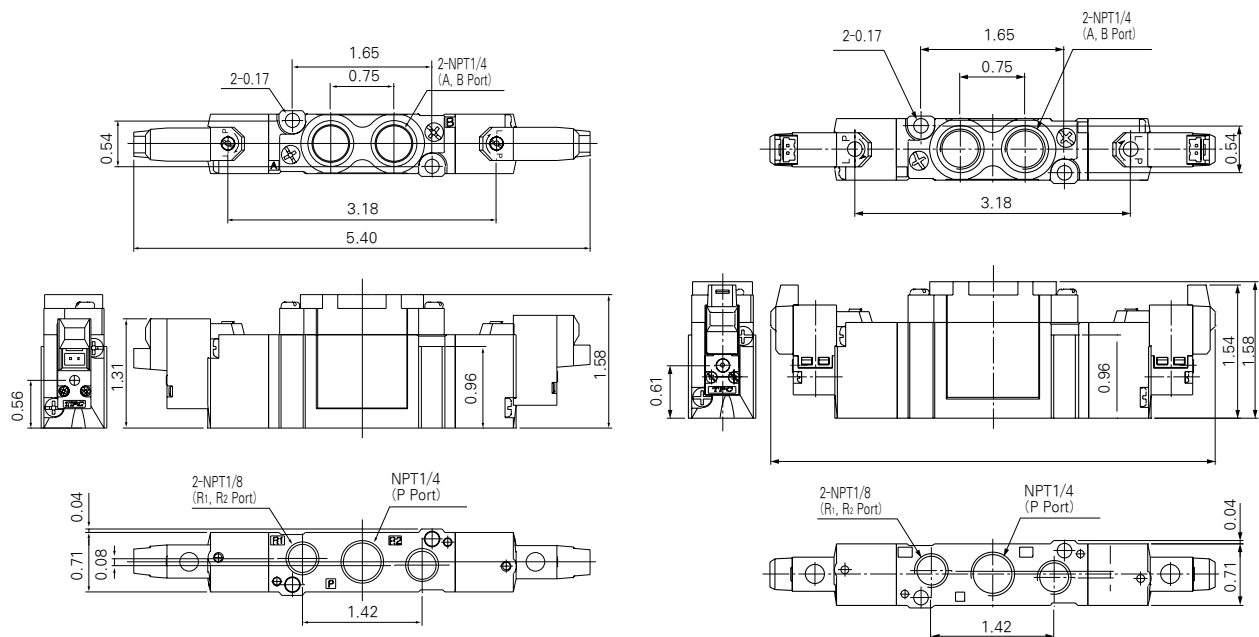
Series DV1000 · 3000 · 4000

Dimensions

DV4120 Single / Body Ported

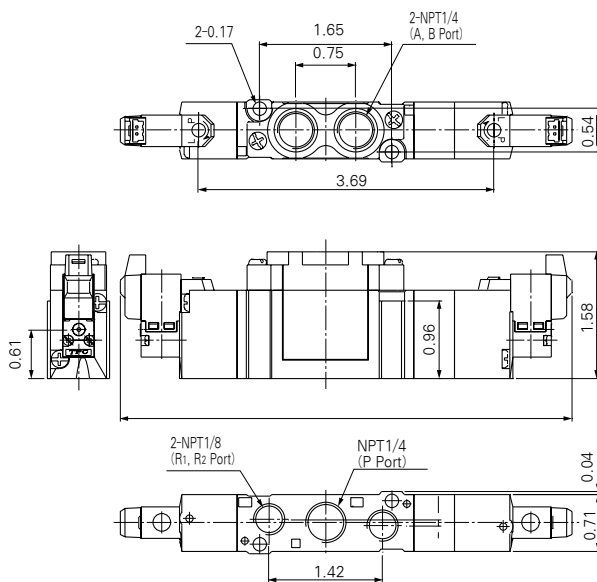
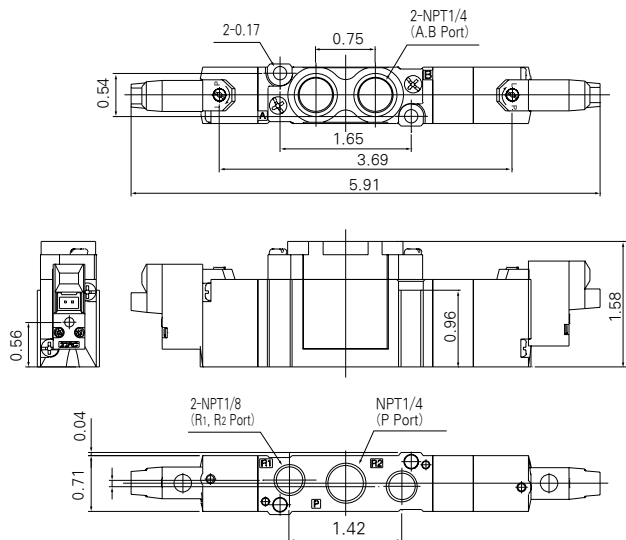


DV4220 Double / Body Ported

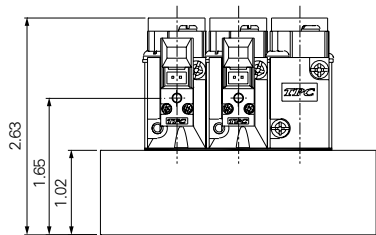
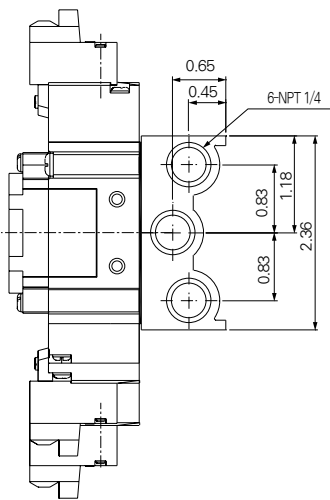
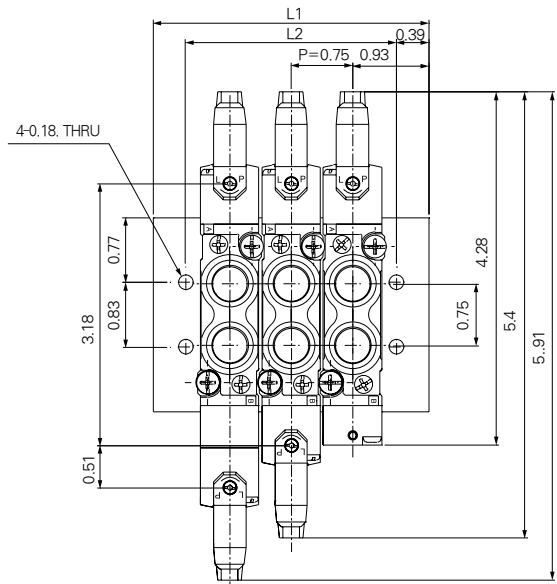


Dimensions

DV4320 3 Position / Body Ported



Dimensions / Series DVM4-20



	(inch)																			
Stations	2	3	4	5	6	7	8	9	10	11	12	13	14	15	16	17	18	19	20	
L1	2.60	3.35	4.09	4.84	5.59	6.34	7.09	7.83	8.58	9.33	10.08	10.83	11.57	12.32	13.07	13.82	14.57	15.31	16.06	
L2	1.81	2.56	3.31	4.06	4.80	5.55	6.30	7.05	7.80	8.54	9.29	10.04	10.79	11.54	12.28	13.03	13.78	14.53	15.28	

DV1000 · 3000 · 4000

DV2000

DS2000

DS3000

DS5000

DS6000

DX2

DV100

DS300

DW

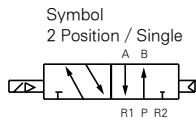
DP300 · 3000 · 5000

DM

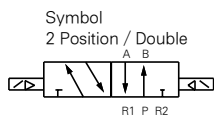
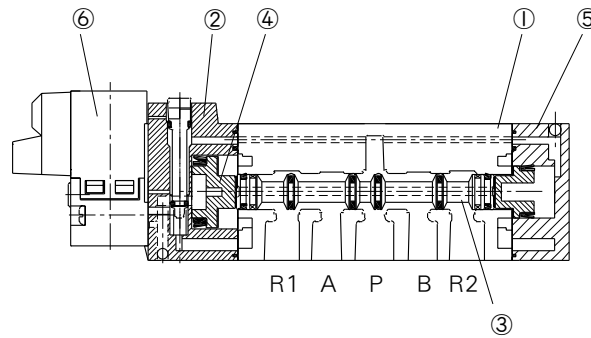
DH

Series DV1000 · 3000 · 4000

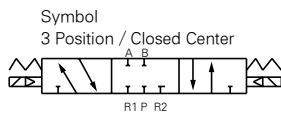
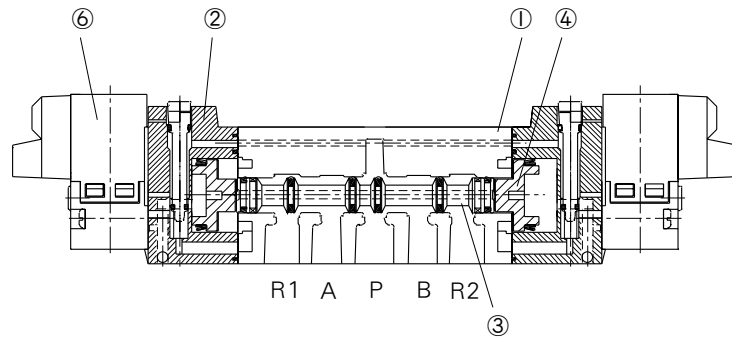
Construction / Base Ported



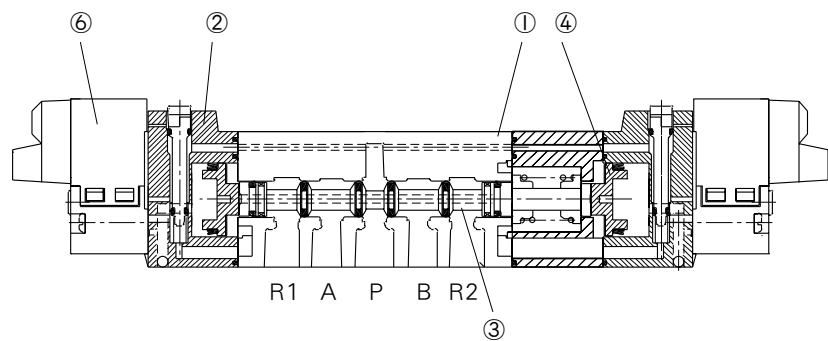
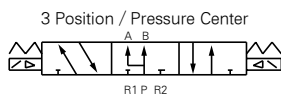
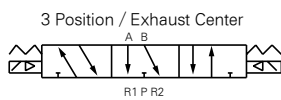
2 Position Single



2 Position Double



3 Position Closed Center / Exhaust Center / Pressure Center

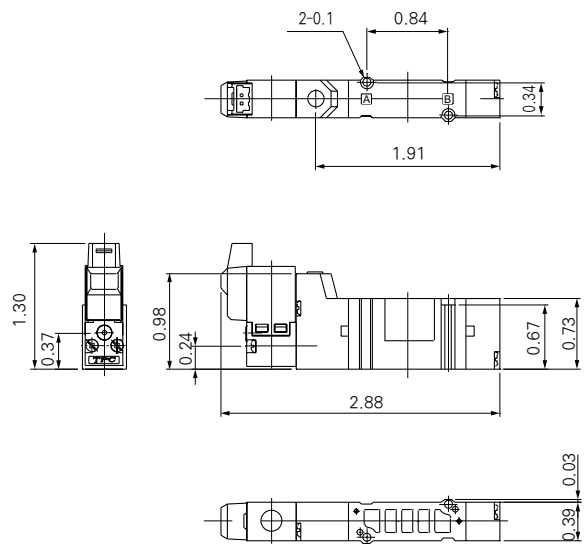
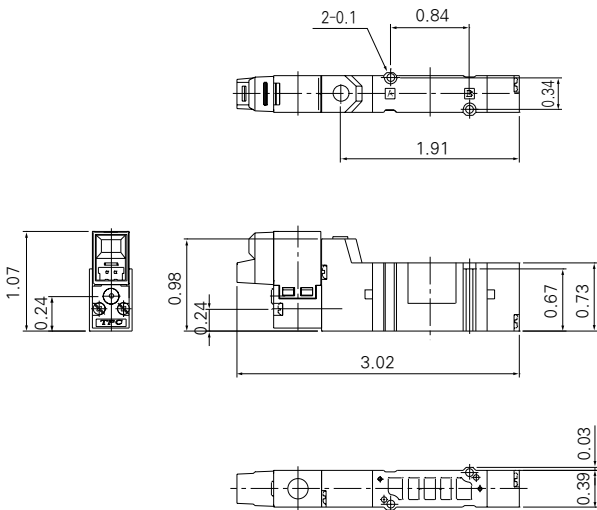


Component Parts

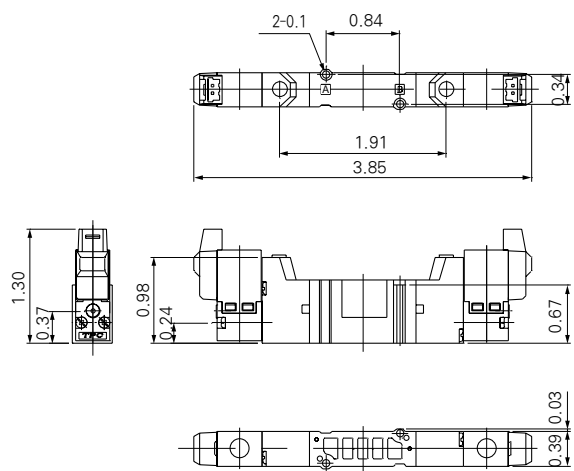
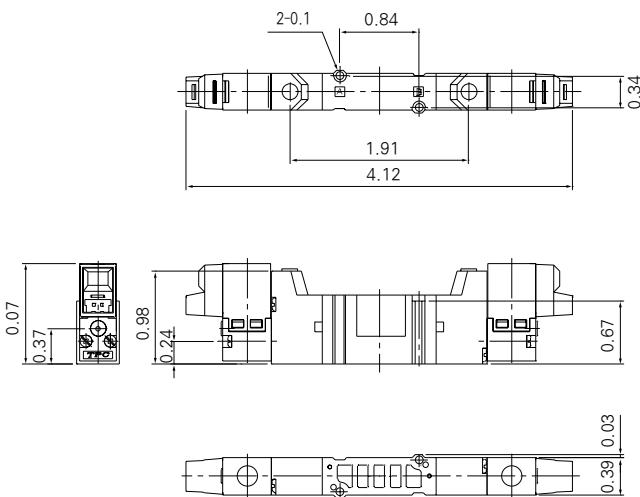
No.	Description	Material
1	BODY	Aluminum die Cast
2	ADAPTER PLATE	Resin
3	SPOOL	Aluminum
4	PISTON	Resin
5	END COVER	Resin
6	SOLENOID ASSY.	

Dimensions

DV1140 Single / Base Ported



DV1240 Double / Base Ported



DV1000 · 3000 · 4000

DV2000

DS2000

DS3000

DS5000

DS6000

DX2

DV100

DS300

DW

DP300 · 3000 · 5000

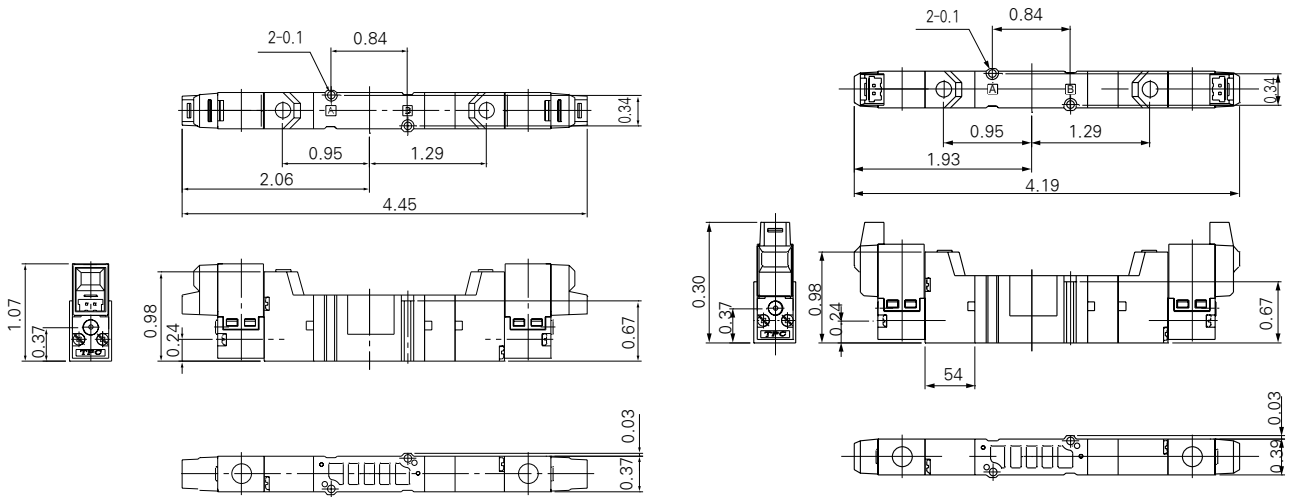
DM

DH

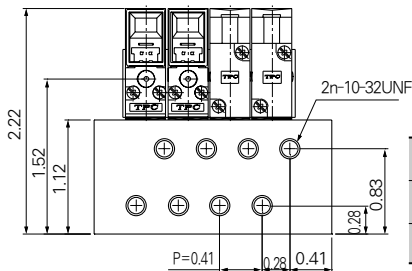
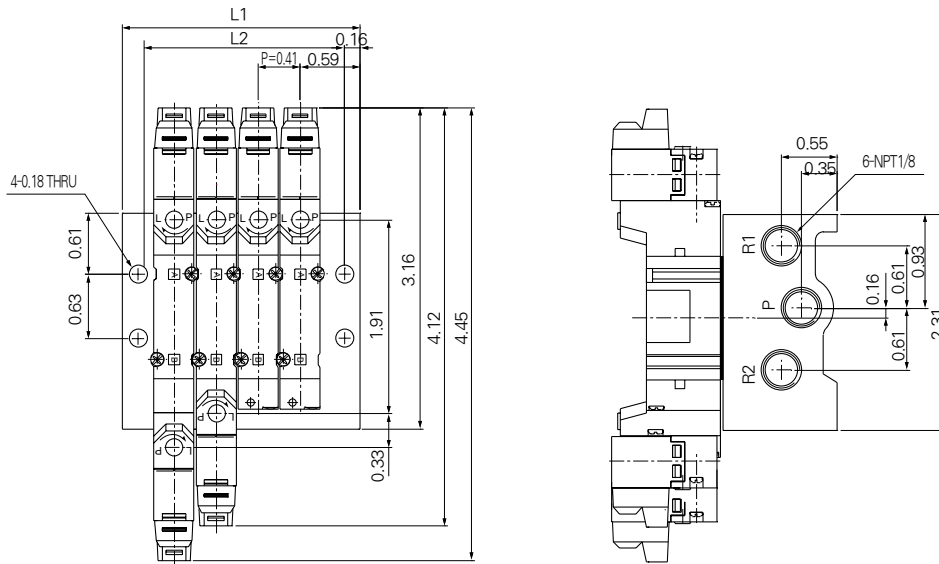
Series DV1000 · 3000 · 4000

Dimensions

DV1340 3 Position / Base Ported



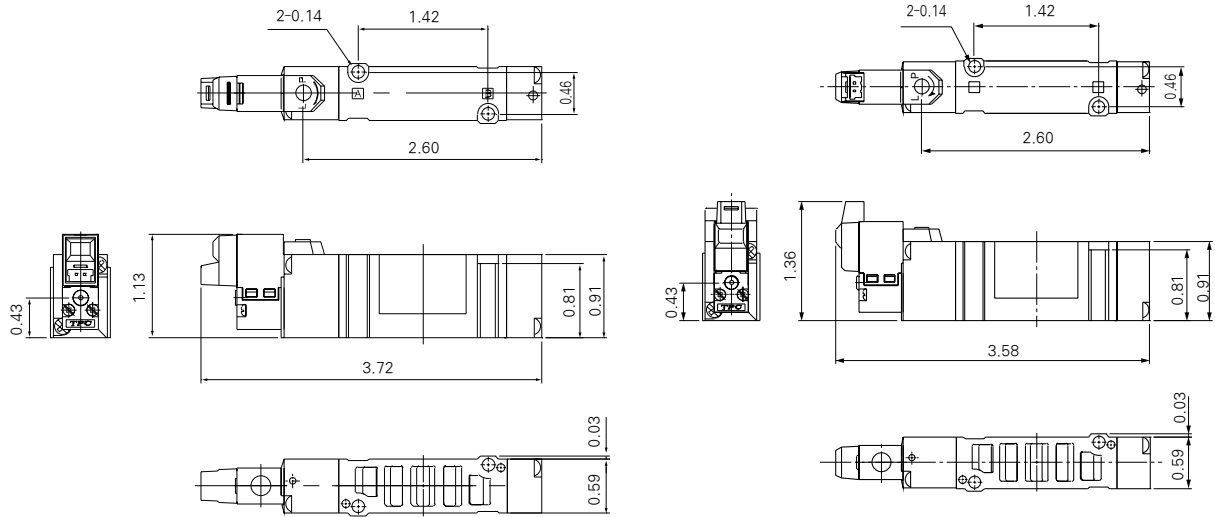
Dimensions / Series DVM1-40



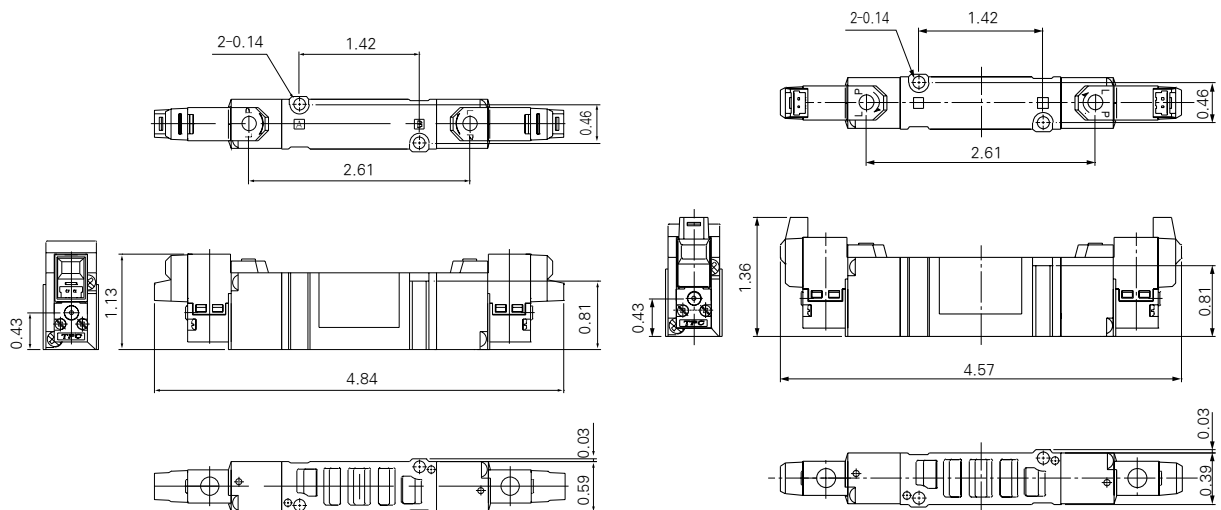
	(mm)																			
Stations	2	3	4	5	6	7	8	9	10	11	12	13	14	15	16	17	18	19	20	
L1	1.52	1.93	2.34	2.76	3.17	3.58	4.00	4.41	4.82	5.24	5.65	6.06	6.48	6.89	7.30	7.72	8.13	8.54	8.96	
L2	1.20	1.61	2.03	2.44	2.85	3.27	3.68	4.09	4.51	4.92	5.33	5.75	6.16	6.57	6.99	7.40	7.81	8.23	8.64	

Dimensions

DV3140 Single / Base Ported



DV3240 Double / Base Ported



DV1000 ·
3000 · 4000

DV2000

DS2000

DS3000

DS5000

DS6000

DX2

DV100

DS300

DW

DP300 ·
3000 · 5000

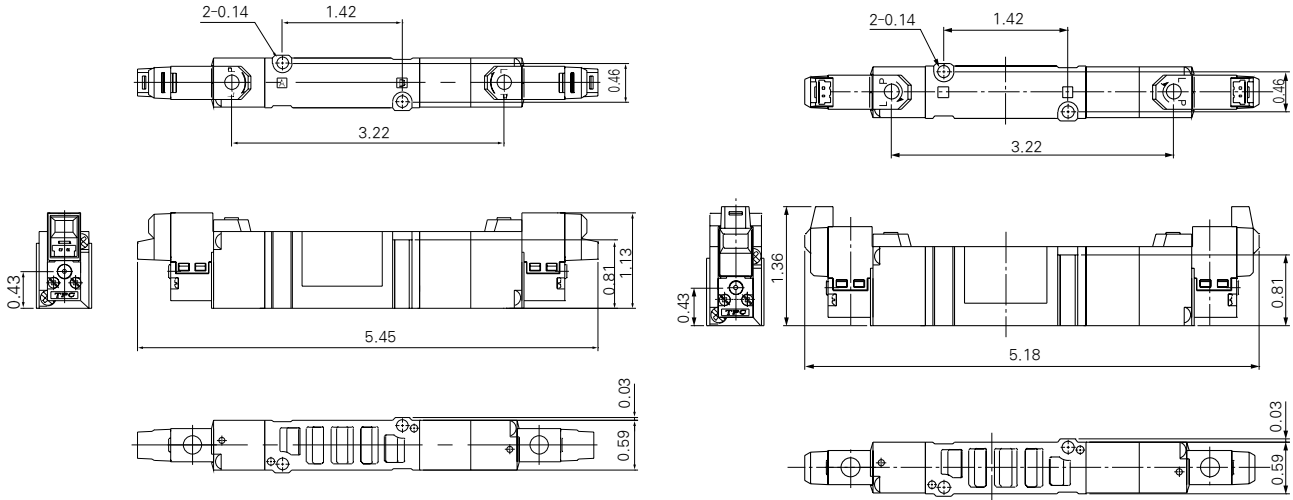
DM

DH

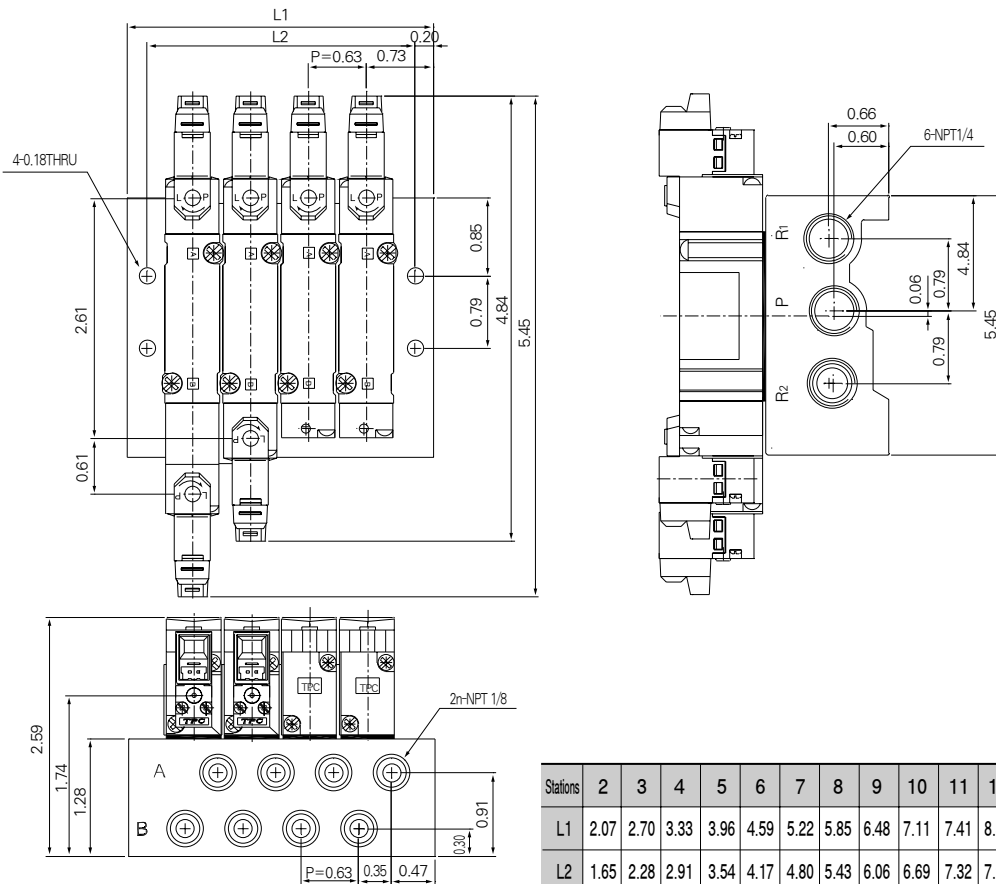
Series DV1000 · 3000 · 4000

Dimensions

DV3340 3 Position / Base Ported



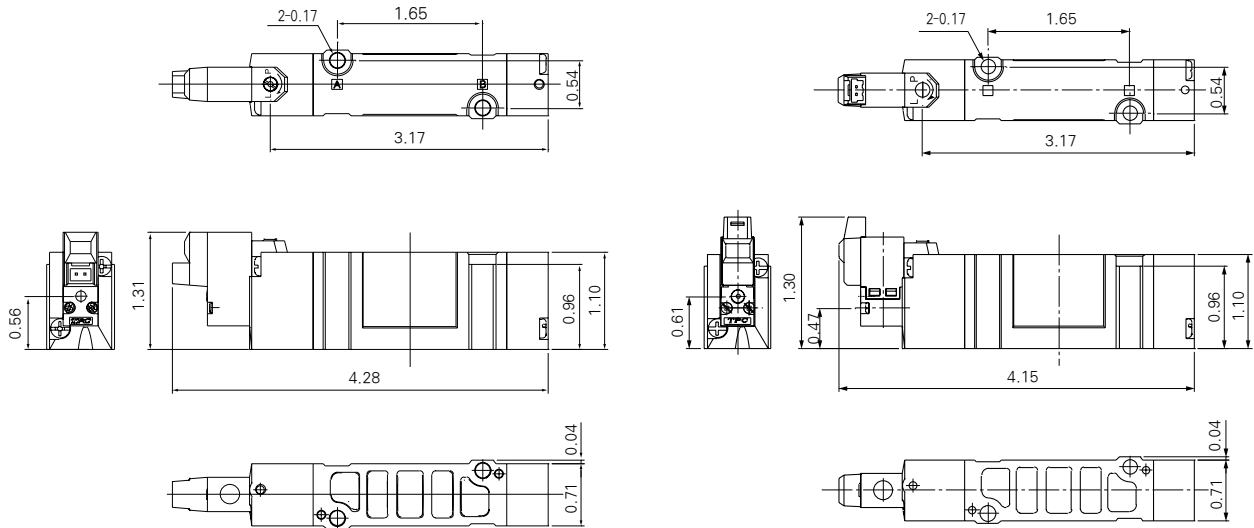
Dimensions / Series DVM3-40



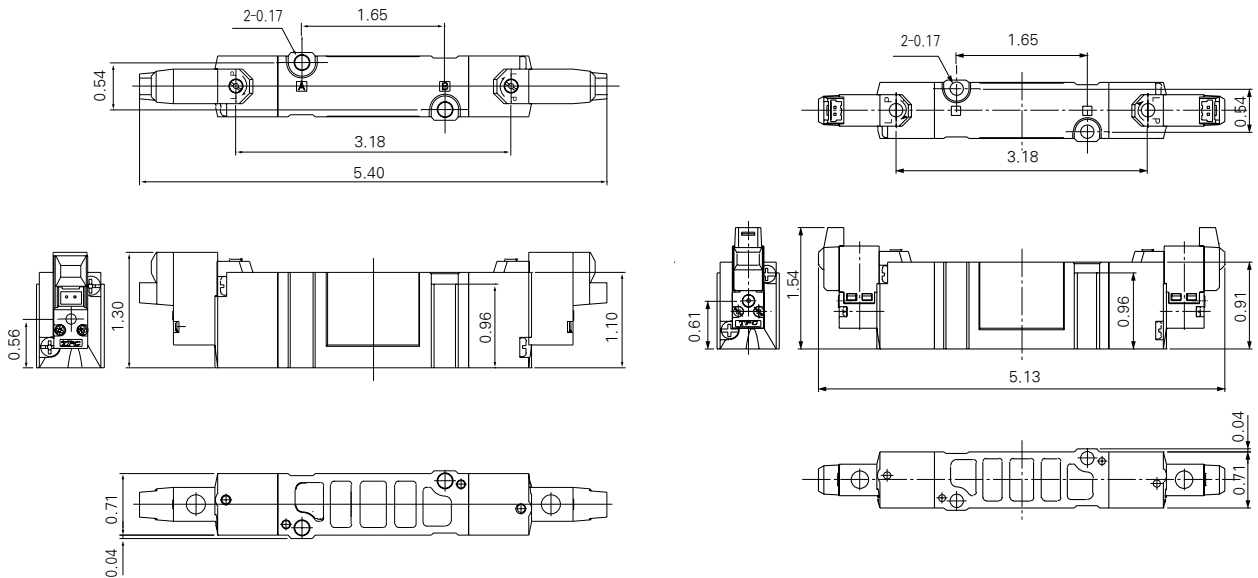
	(inch)																			
Stations	2	3	4	5	6	7	8	9	10	11	12	13	14	15	16	17	18	19	20	
L1	2.07	2.70	3.33	3.96	4.59	5.22	5.85	6.48	7.11	7.74	8.37	9.00	9.63	10.26	10.89	11.52	12.15	12.78	13.41	
L2	1.65	2.28	2.91	3.54	4.17	4.80	5.43	6.06	6.69	7.32	7.95	8.58	9.21	9.84	10.47	11.10	11.73	12.36	12.99	

Dimensions

DV4140 Single / Base Ported



DV4240 Double / Base Ported



DV1000 · 3000 · 4000

DV2000

DS2000

DS3000

DS5000

DS6000

DX2

DV100

DS300

DW

DP300 · 3000 · 5000

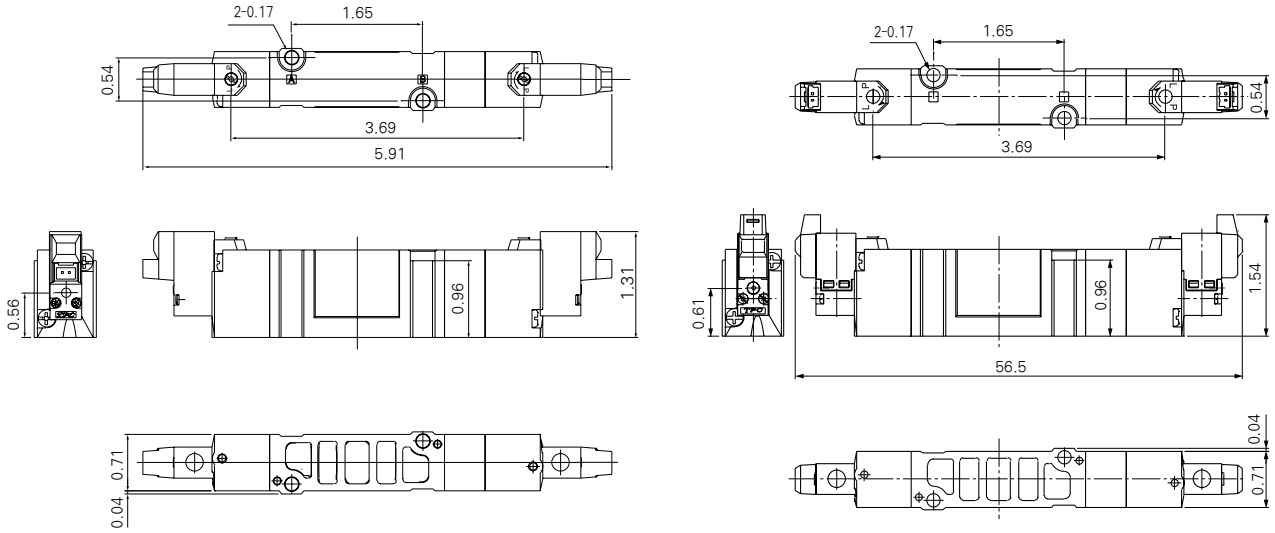
DM

DH

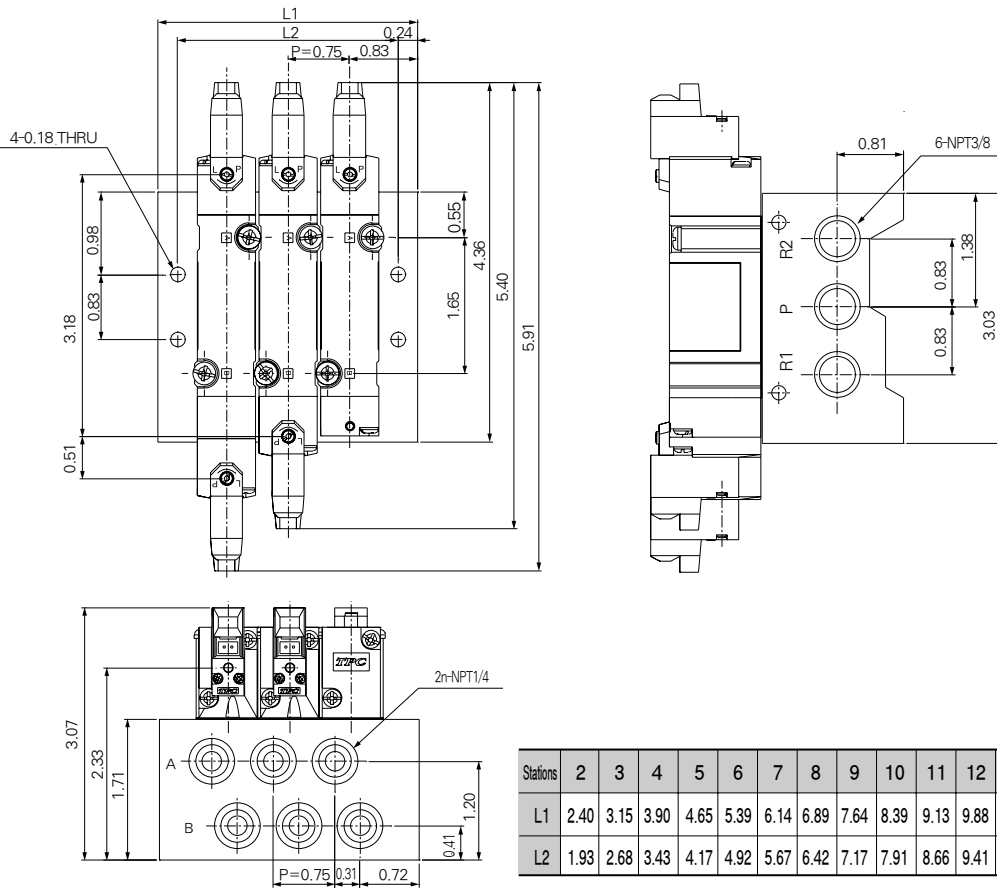
Series DV1000 · 3000 · 4000

Dimensions

DV4340 3 Position / Base Mounted



Dimensions / Series DVM4-40



	(inch)																			
Stations	2	3	4	5	6	7	8	9	10	11	12	13	14	15	16	17	18	19	20	
L1	2.40	3.15	3.90	4.65	5.39	6.14	6.89	7.64	8.39	9.13	9.88	10.63	11.38	12.13	12.87	13.62	14.37	15.12	15.87	
L2	1.93	2.68	3.43	4.17	4.92	5.67	6.42	7.17	7.91	8.66	9.41	10.16	10.91	11.65	12.40	13.15	13.90	14.65	15.39	