

Series **ARD**

Round Cylinder/Double Acting

Bore size : $\phi 32$, $\phi 40$, $\phi 50$, $\phi 63$



- COMPACT LIGHT DESIGN
- HIGH SPEED ACTUATOR
- 2 TYPES OF AIR CUSHION (AIR/RUBBER)
- LIGHT WEIGHT

How To Order

ARD B A 40 — 150 — W4

1
2
3
4
5
6
7

1 Round Cylinder
* (Built-in Magnet, Bumper, Non-lube standard)

2 Mounting
B : Basic type

3 Cushion
Blank : Rubber Cushion
A : Air Cushion

4 Bore Size(mm)
32 : 32mm
40 : 40mm
50 : 50mm
63 : 63mm

5 Stroke(mm)

6 Applicable Reed Switch Auto Switch
Blank : Without Auto Switch (Cylinder with built-in Magnet)
Reed Switch
W4(2wire DC24V, AC 100V)
Band mounted type(Grommate)
※ Standard Lead 1m (upto 3m optional)

7 Number of Switches
Blank : 2 pcs.
S : 1 pc.
n : n pcs.

Stroke

Rubber Cushion	Stroke	Air Cushion	Stroke
$\phi 32$	25~450mm	$\phi 32$	25~450mm
$\phi 40$	25~800mm	$\phi 40$	25~800mm
$\phi 50$	25~1200mm	$\phi 50$	25~1200mm
$\phi 63$	25~1200mm	$\phi 63$	25~1200mm

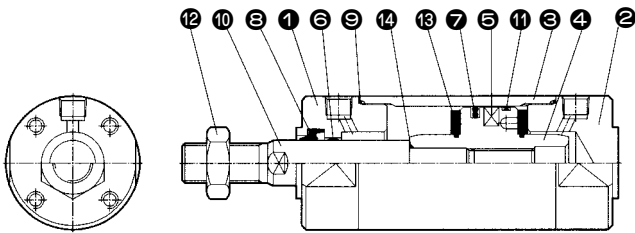
Series ARD

Specifications

Fluid	Air	
Proof Pressure	15 kgf/cm ²	
Max. Operation Pressure	9.9 kgf/cm ²	
Min. Operation Pressure	0.5 kgf/cm ²	
Ambient and Fluid Temperature	5~ 60℃	
Lubrication	None(Non-Lube)	
Piston Speed	50~1000 mm/sec	
Stroke Tolerance	~1000ST: $\begin{smallmatrix} +1.4 \\ 0 \end{smallmatrix}$ / ~1200ST: $\begin{smallmatrix} +1.8 \\ 0 \end{smallmatrix}$	
Thread Tolerance	KS 2 Class	
Cushion	Rubber Cushion	Air Cushion

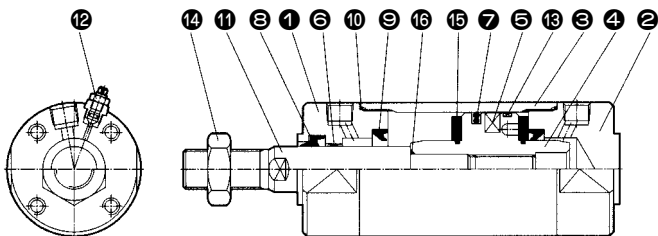
Construction/Parts List

ARD $\phi 32 \sim \phi 63$ (Rubber Cushion Type)



No.	Description	Material	Note
14	Piston Gasket	NBR	
13	Bumper	Urethane	
12	Rod End Nut	Rolled Steel	
11	Wear Ring	-	
10	Piston Rod	Carbon Steel	
9	Tube Gasket	NBR	
8	Rod Packing	NBR	
7	Piston Packing	NBR	
6	Bush	Lead Bronze Casting	
5	Magnet	Ba Ferrite + NBR	
4	Piston	Al	
3	Cylinder Tube	Al	
2	Head Cover	Al	
1	Rod Cover	Al	

ARDA $\phi 32 \sim \phi 63$ (Air Cushion Type)

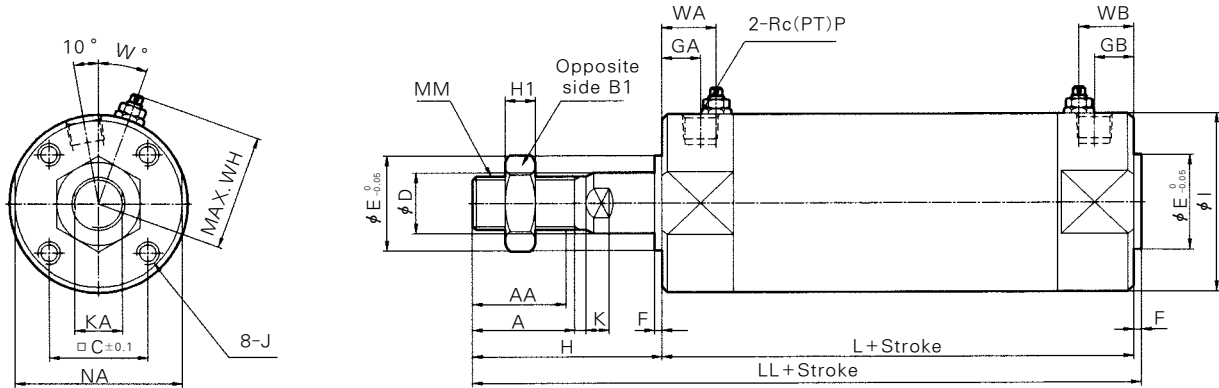


No.	Description	Material	Note
16	Piston Gasket	-	NBR
15	Bumper	Urethane	
14	Rod End Nut	Rolled Steel	
13	Wear Ring	-	
12	Cushion Valve Ass'y		
11	Piston Rod	Carbon Steel	
10	Tube Gasket	NBR	
9	Cushion Packing	NBR	
8	Rod Packing	NBR	
7	Piston Packing	NBR	
6	Bush	Lead Bronze Casting	
5	Magnet	Ba Ferrite + NBR	
4	Piston	Al	
3	Cylinder Tube	Al	
2	Head Cover	Al	
1	Rod Cover	Al	

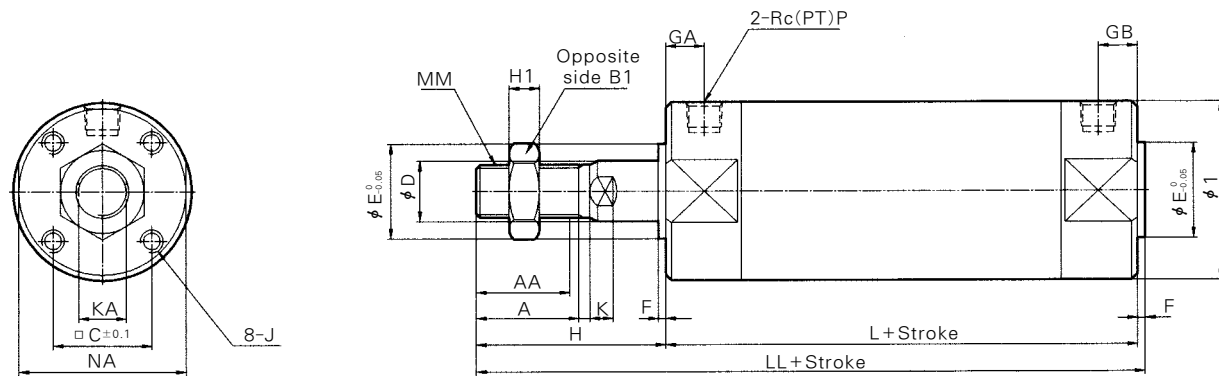
Dimension

(mm)

Air Cushion Type



Rubber Cushion Type

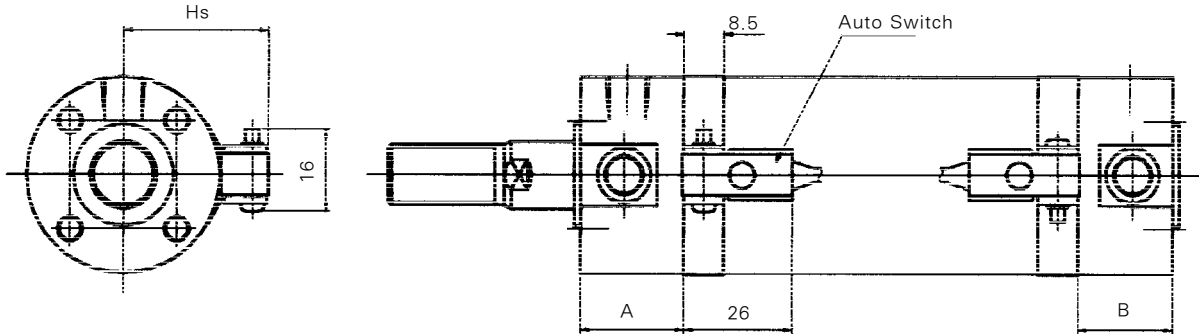


(mm)

Bore size (mm)	Standard stroke Range(mm) Extended stroke Range(mm)	AA	A	□C	φD	φE	F	GA	GB	φI	J	KA	MM	NA	P	L	H	LL	WA	WB	WH	W	H1	B1	
φ32	~300 301~450	19.5	22	20	12	18	2	12	12	38	M5×0.8 DP:8	5.5	10	M10×1.25	36	1/8	82	40	124	14	14	28.5	25	6	17
φ40	~300 301~800	27	30	26	16	25	2	13	13	47	M6×1 DP:12	6	14	M14×1.5	44	1/8	87	50	139	15	15	33	20	8	22
φ50	~300 301~1200	32	35	32	20	30	2	14	14	58	M8×1.25 DP:16	7	18	M18×1.5	55	1/4	102	58	162	16	16	38.5	20	11	27
φ63	~300 301~1200	32	35	38	20	32	2	14	14	72	M10×1.5 DP:16	7	18	M18×1.5	69	1/4	105	58	165	16	16	45.5	20	11	27

Series ARD

Auto Switch Setting Position



Auto Switch Mounting Position

Bore size	W4 (mm)		
	A	B	Hs
φ32	23	33	30.5
φ40	32	29	35
φ50	39.5	37.5	40.5
φ63	41	38	47.5

Minimum Auto Switch Mountable Stroke

Type of Auto Switch	Number of Switch (mm)		
	With 2pcs.		With 1pc.
	Different Orientation	Same Orientation	
W4	15	50	10