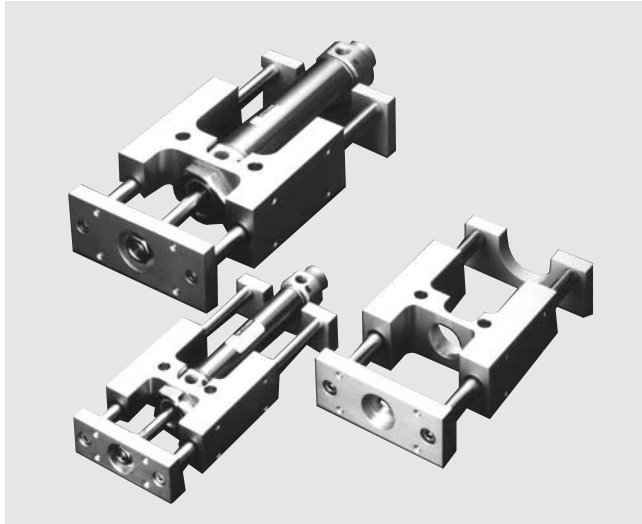


Series AGX/GX

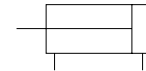
Guide Cylinder/Guide Unit

Bore Size : $\phi 20$, $\phi 25$, $\phi 32$, $\phi 40$



- COMPACT INTEGRATION OF AGX/GX SERIES CYLINDER WITH GUIDE RODS. THE LINEAR TRANSFER UNIT RESISTS LATERAL LOADING AND PROVIDES PRECISE, NON-ROTATING MOTION.
- THE AGX/GX SERIES IS EQUIPPED WITH A STANDARD MAGNET FOR AUTO SWITCH CAPABILITY
- 2 GUIDE RODS OFFER HIGH NON-ROTATING ACCURACY.

Symbols



How to Order

AGX **B** **B** **40** — **150** **A** **W4**

1
2
3
4
5
6
7
8

GX **B** **B** **40** — **150**

1
2
3
4

Compact Guide Cylinder

- | | |
|--|---|
| <p>1 Type
Guide Cylinder
· Built-in magnet</p> <p>2 Type of Bearing
B : Bush Type</p> <p>3 Mounting
B : Standard</p> <p>4 Bore Size
20 : 20mm
25 : 25mm
32 : 32mm
40 : 40mm</p> <p>5 Cylinder Stroke(mm)
$\phi 20, \phi 25$: 25, 50, 75,
100, 125, 150,
200, 250, 300
$\phi 32$: 25, 50, 75, 100, 125,
150, 200, 250, 300,
350, 400
$\phi 40$: 25, 50, 75, 100, 125,
150, 200, 250, 300,
350, 400, 450, 500</p> | <p>6 Cushion
Blank : Rubber Cushion
A : Air Cushion</p> <p>7 Applicable Auto Switch Reed Switch
(Band Mounted Type)
<Grommet>
Blank : Without Auto Switch
W5
*The standard length of lead is 0.5m, but a case of 3m (possible to take 3m to 3m to all type) is indicated as L. (Example)W5L</p> <p>8 Number of Switches
Blank : 2 pcs.
S : 1pc.
N : n pcs.</p> |
|--|---|

Guide Unit

- | | |
|---|--|
| <p>1 Type of Bearing
B : Bush Type</p> <p>2 Mounting
B : Standard</p> <p>3 Bore Size
20 : 20mm
25 : 25mm
32 : 32mm
40 : 40mm</p> | <p>4 Cylinder Stroke(mm)
$\phi 20, \phi 25$: 75, 100,
125, 150,
200, 250,
300
$\phi 32$: 75, 100, 125, 150,
200, 250, 300,
350, 400
$\phi 40$: 75, 100, 125,
150, 200, 250,
300, 350, 400,
450, 500</p> |
|---|--|

Specifications

Action	Double Acting
Fluid	Air
Proof Pressure	15kgf/cm ² {1500kPa}
Max. Operating Pressure	9.9kgf/cm ² {990kPa}
Min. Operating Pressure	0.5kgf/cm ² {50kPa}
Ambient and Fluid Temperature	-10℃~+70℃
Lubrication	Non-lube
Thread Tolerance	KS 2 class
Stroke Tolerance	+ ^{1.4} / ₀ mm

ACP

UACP

AX

AS

AM

AL
ALX

UARD

UAQ

AJ

AG

UAG

ADM

ADR

AMR

UAMR

AST

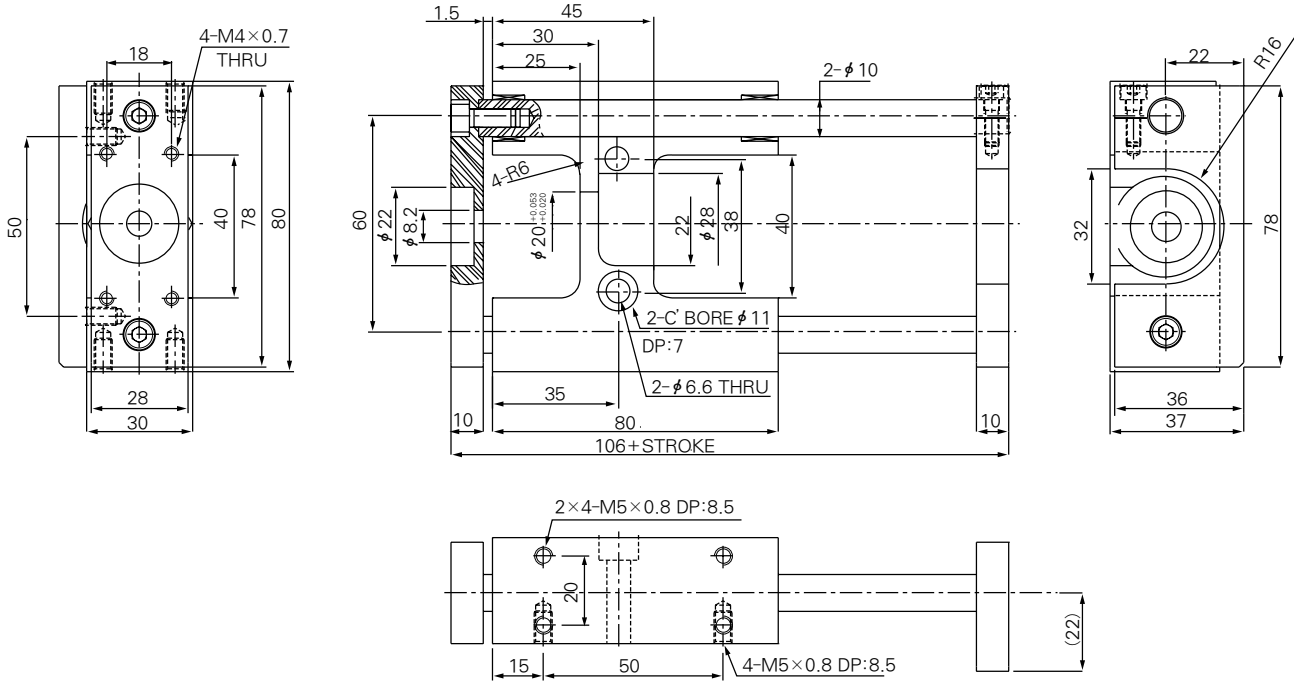
W~

Series AGX

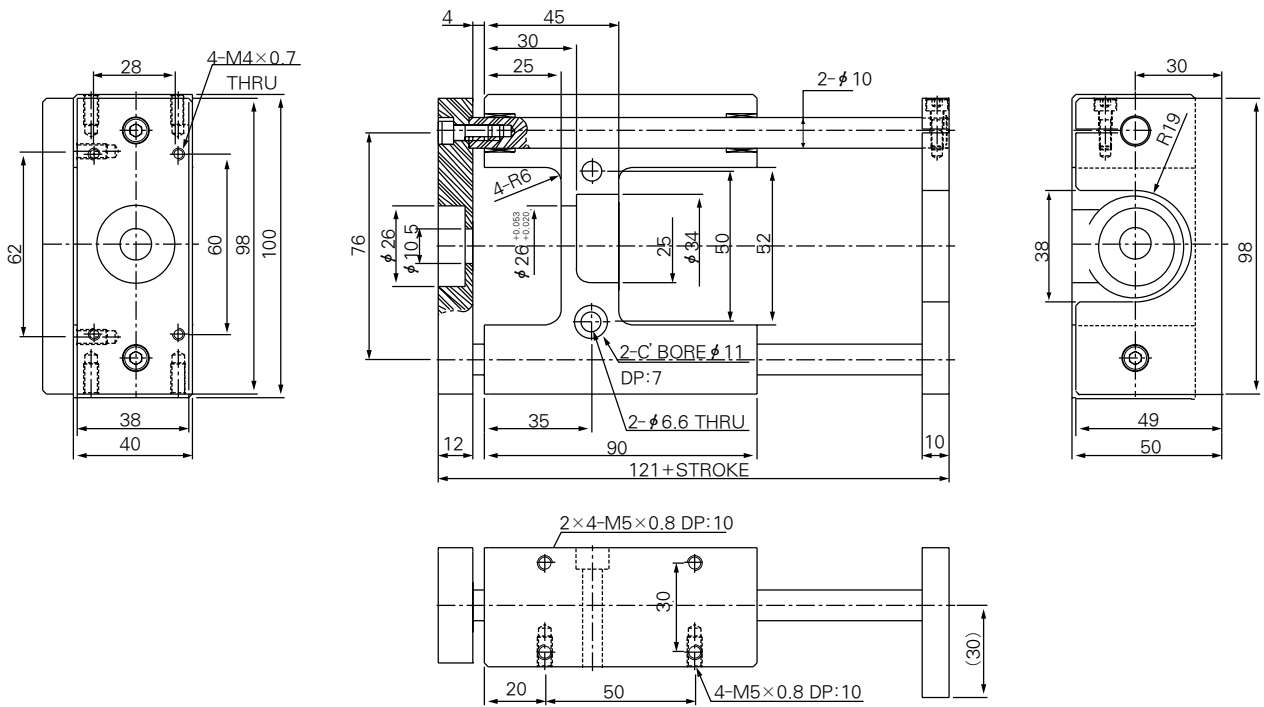
Guide Cylinder : Series AGX

Unit : mm

φ 20 (AGXBB20- * *)



φ 25 (AGXBB25- * *)

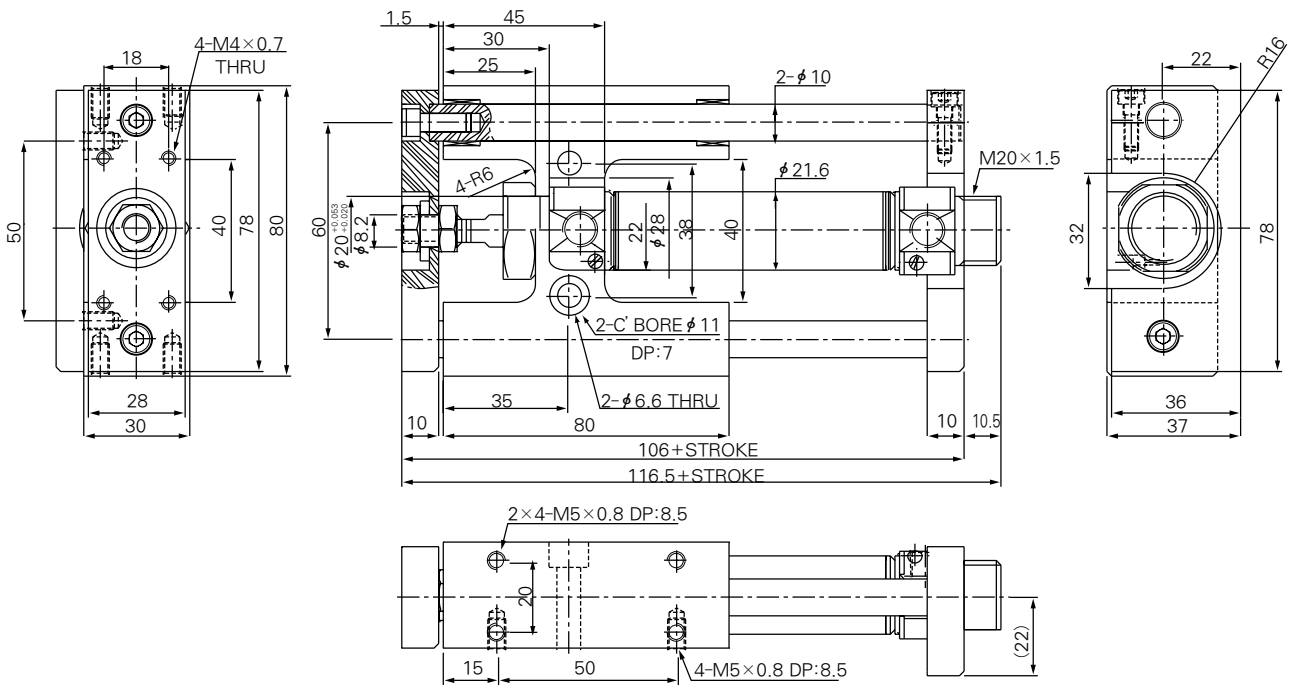


Series AGX

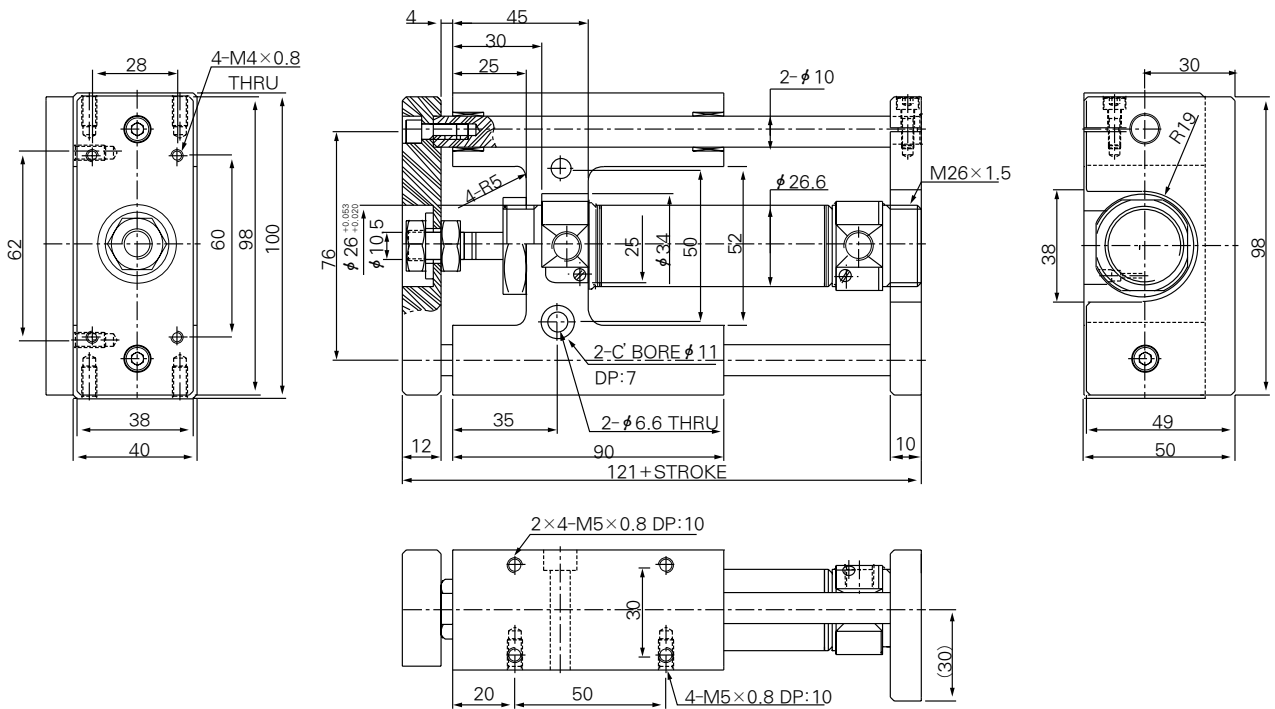
Guide Unit

Unit : mm

φ 20(GXBB20- **)



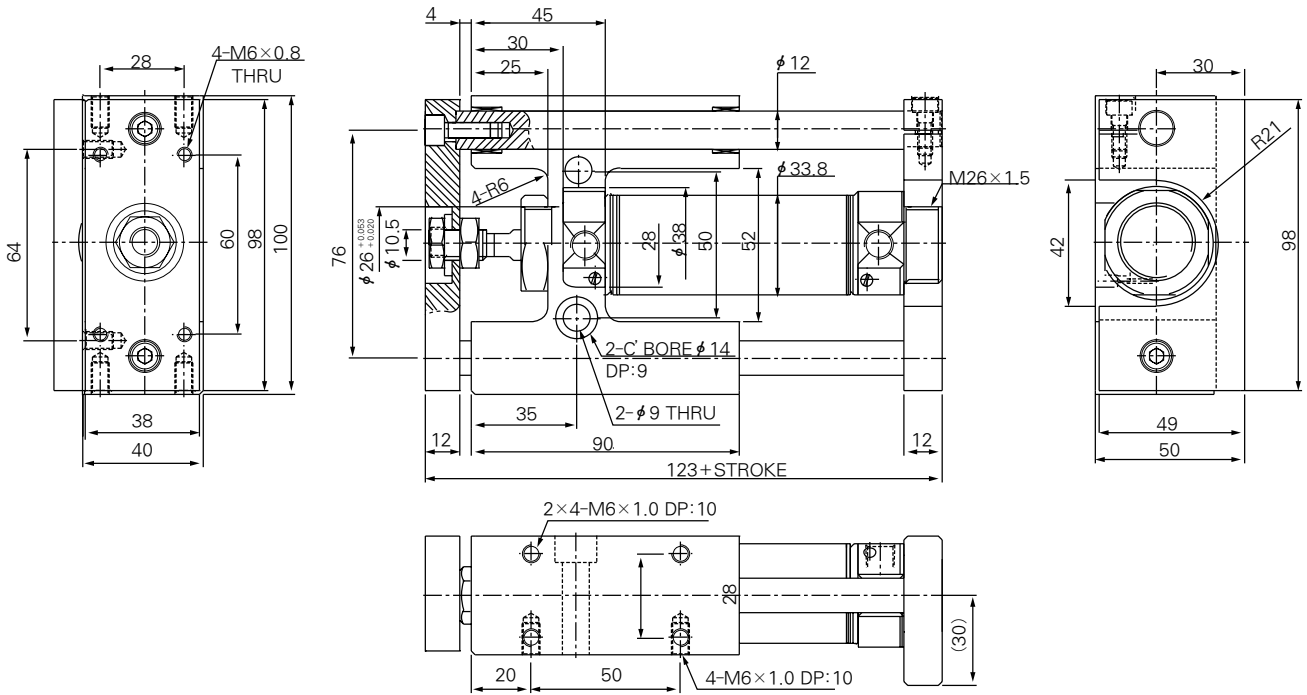
φ 25(GXBB25- **)



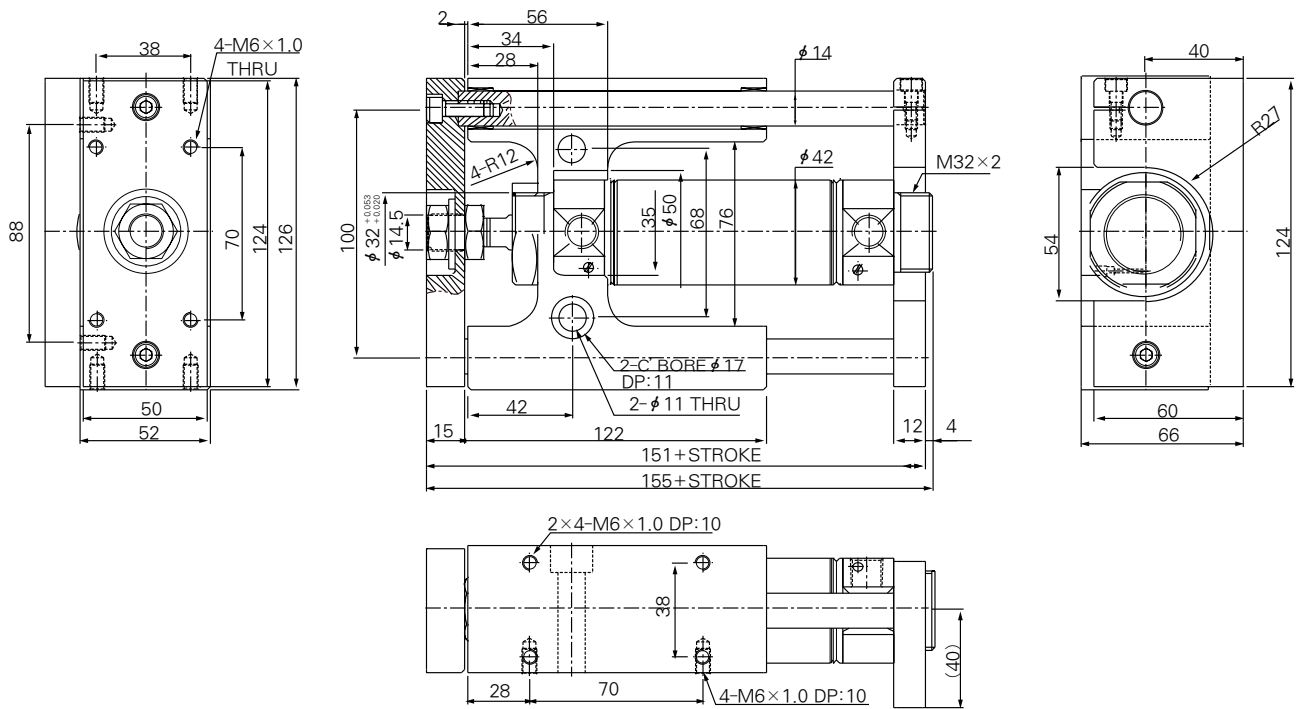
Guide Unit

Unit : mm

φ 32(GXBB32- * *)



φ 40(GXBB40- * *)



- ACP
- UACP
- AX
- AS
- AM
- AL
- ALX
- UARD
- UAQ
- AJ
- AG**
- UAG
- ADM
- ADR
- AMR
- UAMR
- AST
- W~