

# Series **UADQCP**

## Compact Cylinder for Intense-Magnetism Resistant

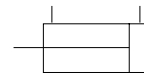
Bore Size mm(inch) :  $\phi 50(2 \text{ Nom})$ ,  $\phi 63(2 \frac{1}{2} \text{ Nom})$



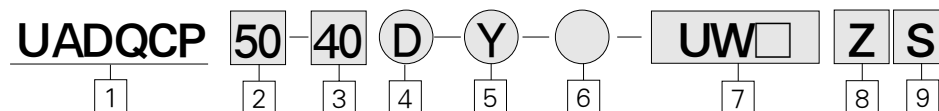
- FOR WELDING MACHINE/INTENSE MAGNETIC FIELD
- SPACE SAVING COMPACT DESIGN
- MANUFACTURING CERTIFIED TO ISO 9001/9002 STANDARDS

### Symbol

Double Acting/  
Single Rod Type



## How to Order



**1 Series : Compact Cylinder for Intense-Magnetism Resistant**

**2 Bore Size mm(inch)**  
50 :  $\phi 50 (2 \text{ Nom.})$   
63 :  $\phi 63 (2 \frac{1}{2} \text{ Nom.})$

**3 Standard Stroke(mm)**  
50 : 25, 30, 35, 40, 45, 50  
63 : 25, 30, 35, 40, 45, 50

**4 Double Acting : D**

**5 Rod End Options**  
Blank : Without attachment  
Y : With double knuckle joint pin, flat washer, split pin

**6 Special Option**  
Blank : Standard Type

**7 Auto Switch**  
Blank : Without auto switch  
UW6 : 120VAC, OFF lighting  
UW7 : 24VDC, 120VDC, ON lighting  
\* For details, Please refer to Page 43.

**8 Switch Lead Wire Length**  
L : 3m  
Z : 5m

**9 Number of Switches**  
Blank : 2 pcs.  
S : 1 pc.

### PART No. of Auto Switch Fittings

Switch	Part No.	
	$\phi 50 (2 \text{ Nom})$	$\phi 63 (2 \frac{1}{2} \text{ Nom.})$
UW6,UW7	BQP1T-050	

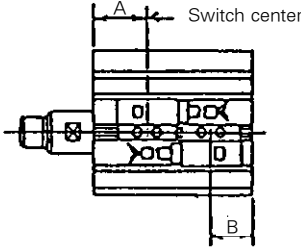
### Cylinder Specifications

Type	UADQCP
Fluid	Air
Bore Size mm(inch)	$\phi 50 (2 \text{ Nom.})$ , $\phi 63 (2 \frac{1}{2} \text{ Nom.})$
Max. Operating Pressure	140 PSI {1.0 MPa}
Proof Pressure	231 PSI {1.5 MPa}
Ambient Fluid Temperature	40~140°F
Thread end Tolerance	KS Grade 2
Stroke Tolerance	$^{+0.039}_0$ inch

Minimum stroke for mounting intense-magnetism resistant switch. (mm)

Switch Mounting Position	With 1 Switch	With 2 Switches		
		Same surface	Different Surfaces	Different Surfaces
Cylinder Type Bore				
UADQCP50,63	25	30	25	

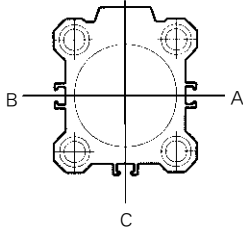
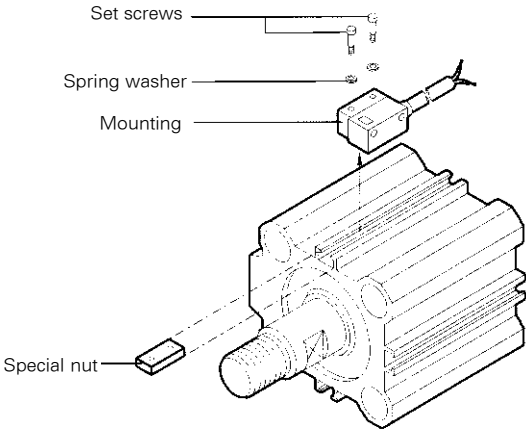
Auto Switch Mounting Position (Stroke End) (mm)



Type	Bore	φ 50 (2Nom.)		φ 63 (2 1/2 Nom.)	
		A	B	A	B
UADQCP		33.5	22.5	37.5	24

Auto Switch Mounting

Using the special nut shown below, fix the auto switch in the specified position with two screws. (The proper tightening torque of set screws is 6 kgf · cm.)



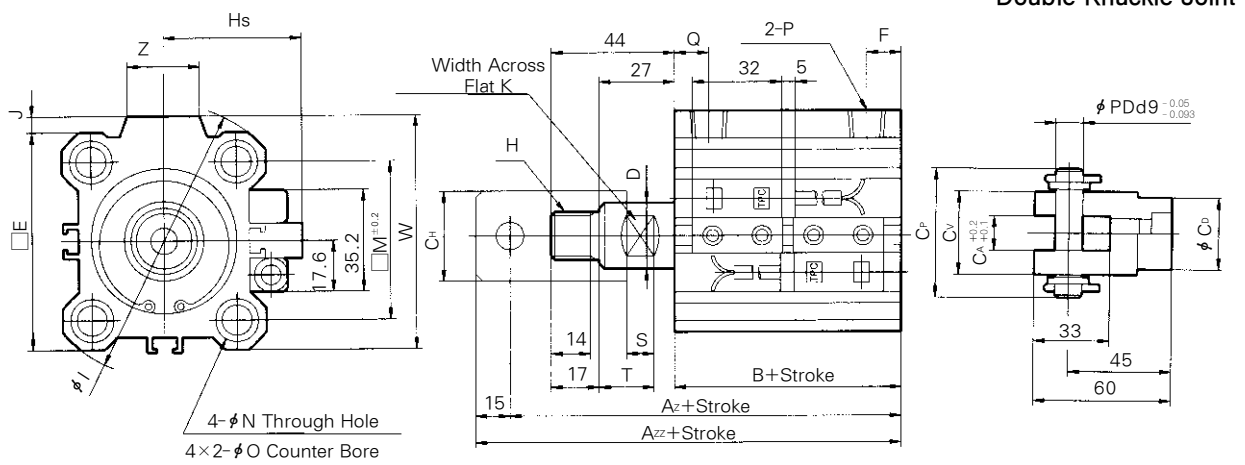
The auto switch can be mounted in three positions-A, B and C-shown above.

- ACP
- UACP
- AX
- AS
- AM
- AL
- ALX
- UARD
- UAQ
- AJ
- AG
- UAG
- ADM
- ADR
- AMR
- UAMR
- AST
- W~

# Series UADQCP

## Dimensions

Bore Size :  $\phi 50$ (2Nom.),  $\phi 63$ (2 $1/2$ Nom.)



(Unit : mm)

Bore size mm(inch)	A	Az	Azz	B	$\phi D$	E	F	H	$\phi I$	J	K	M	$\phi N$	$\phi O$	P	Q	W	Z	T	S	Hs	Cp	Cv	Ca	PD	Ch	Cd
$\phi 50$ (2Nom.)	99.5	117.5	132.5	55.5	20	64	10.5	5/8-18UNF	86	7	17	50	6.6	11Depth 8	NPT1/4	10.5	71	22	20	10	49	55	36	16	12	30	30
$\phi 63$ (2 $1/2$ Nom.)	105	123	138	61	20	77	10.5	5/8-18UNF	103	7	17	60	9	14Depth 10.5	NPT1/4	15	84	22	20	10	55.5	55	36	16	12	30	30