

Reed Switch Type /Tie Rod Mounted Type /Series W3

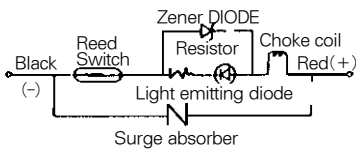
Auto Switch Specifications

Auto Switch Model	W3		
Application	Relay, Sequence Control		
Load Voltage	DC24V	AC100V	AC200V
Max. Load Current/Range of Load Current	5~50mA	5~25mA	5~12.5mA
Protection Circuit Contact Breaker Point	Built-in		
Internal Voltage Drop	2.4V		
Indicator Light	ON:Red Light Emitting Diode		



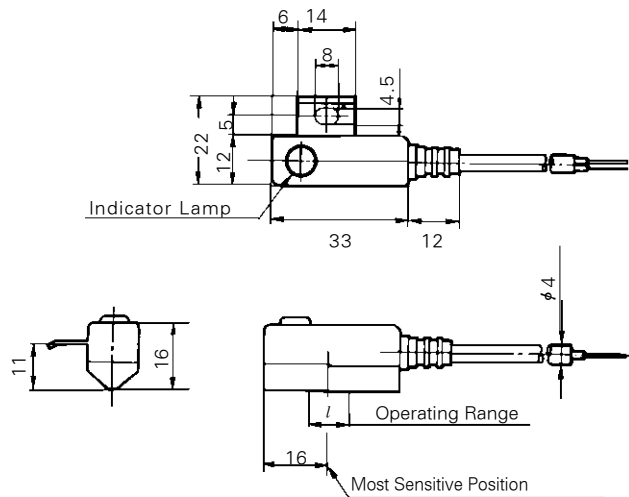
- Current Leakage - None
 - Response time - 1.2ms
 - Lead Wire - Oil proof vinyl. $\phi 4(0.3)\text{mm}^2$, 2 wire(red, black), 0.5m
 - Impact Resistance - 30G
 - Insulation Resistance - 50M Ω or more under the test voltage 500VDC (Between case and cable)
 - Withstand Voltage - 1500VAC 1min(between case and cable)
 - Ambient Temperature - 5~60 $^{\circ}\text{C}$
 - Protective Construction - IEC spec IP67, Water-proof(JISCO920), oil-proof.
- ※ If 3m lead wire is required, L is put at end of model numbers.
(Example) W3L

Auto Switch/Internal Circuit



Auto Switch Dimensions

(mm)



Operating Range (Dimensions)

(mm)

Series	Bore Size(mm)							
	$\phi 40$	$\phi 50$	$\phi 63$	$\phi 80$	$\phi 100$	$\phi 125$	$\phi 140$	$\phi 160$
AMD	9	10	11	11	11	-	-	-
ALD/ALXD	-	-	-	-	-	10	10	10