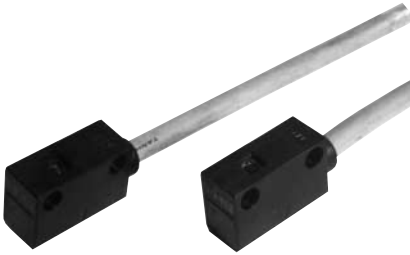


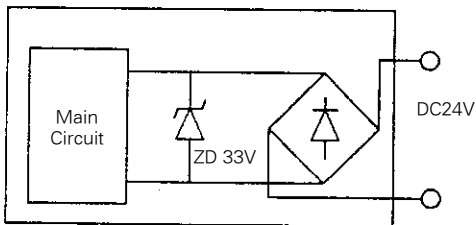
Automatic Solid State Switch/Intense-Magnetism-Resistant Type /Series W2



Auto Switch Specifications

Wiring Method	2 Wire
Applications	24V DC Relay, Sequence controller
Load Voltage	24V DC
Current Load	6~40mA
Internal Voltage Drop	7 V or Less
Current Leakage	1.6mA at 24V DC
Indicator Light	Appropriate operating range-Green light emitting diode
Acting Time	40ms or Less
Lead Wire	Oil proof vinyl cap wire cord $\phi 6$, 0.5mm ² , 2cores(white, black)
Impact Resistance	1,000G
Insulation Resistance	50M Ω or more at 500DC
Ambient Temperature	-10 $^{\circ}$ C~60 $^{\circ}$ C
Protective Construction	EC Standard IP67(Watertight)

Auto Switch Internal Circuit



Auto Switch Dimensions (mm)

