

Reed Switch Type/Solid State Switch Type/Rail Mounted Type Series W1



Auto Switch Specifications

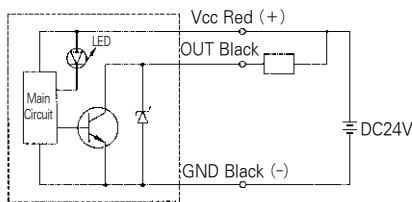
| Auto Switch No. | W1H□ | W13□ |
|-----------------------|---------------------------------------|-----------------------------------|
| Lead Wire Entry | Axial Direction | Right Angle |
| Application | Relay, Sequence Control | |
| Wiring Method | 3 Wire System | 2 Wire System |
| Power Source | DC10~28V | — |
| Load Voltage | DC28V Less | DC24V, AC100V |
| Current Consumption | 100mA Less | DC24V : 5~40mA AC120V : 5~20mA |
| Internal Voltage Drop | 100mA~0.5V Less | 40mA~2.4V Less |
| Current Leakage | DC24V~10μA Less | |
| Current Load | OFF: 5mA or Less ON : 35mA or Less | — |

- Operating Time : Max. 1ms
- Lead Wire : Oil resistant vinyl cord. ϕ 0.13, 0.2mm², 3 cores(red white, black), cores(red, black), 0.5m long
- Shock Resistance : 1000m/S² (102G)
- Insulation Resistance : 50M Ω or more under the test voltage 500V DC between case and cable.
- Withstand Voltage : 1000VAC for 1min.(between lead wire and the case)
- Ambient Temperature : -10~60°C
- Protective Construction : IEC Standard, watertight and oil resisting structure

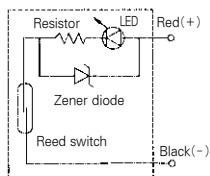
※ "L" is added to the end when the lead is 3m long.
(ex) W1□L

Auto Switch Internal Circuit

W1H□

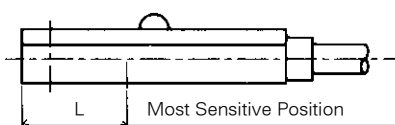
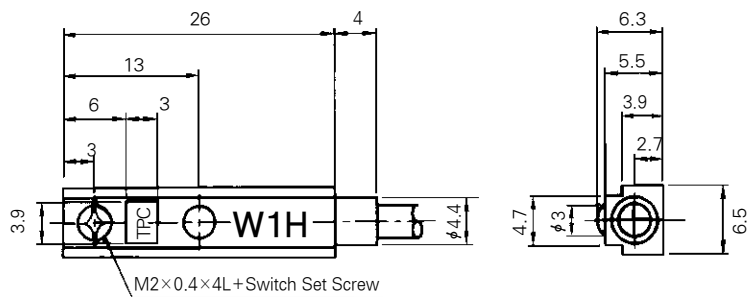


W13□



Auto Switch Dimensions

(mm)



| | (mm) | |
|-----------------|------|------|
| Stations | W1H□ | W13□ |
| L | 10 | 15 |
| Operating Range | 4~10 | 4~10 |