

Series UACPW

Standard Type/Double Acting : Double Rod

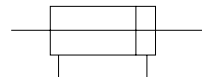
Bore Size mm(inch) : $\phi 6(1/4'' \text{ Nom.})$, $\phi 10(3/8'' \text{ Nom.})$, $\phi 16(5/8'' \text{ Nom.})$



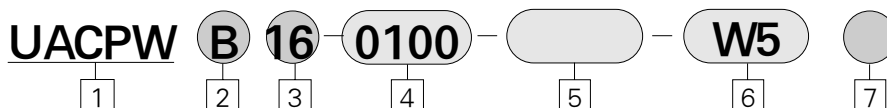
- STAINLESS STEEL BODY FOR HIGH CYCLE LIFE & LOW BREAKAWAY
- BUMPERS STANDARD
- EASY MOUNTING
- LOW BREAKAWAY
- LIGHT COMPACT DESIGN
- MANUFACTURING CERTIFIED TO ISO 9001/9002 STANDARDS

Symbol

Double Acting/Double Rod



How to Order



1 Air Cylinder

Built-in magnet, Rubber cushions are Standard

2 Mounting

B : Standard type
L : Axial foot type
F : Rod side flange type

3 Bore Size/mm(inch)

6 : $\phi 6(1/4 \text{ Nom.})$
10 : $\phi 10(3/8 \text{ Nom.})$
16 : $\phi 16(5/8 \text{ Nom.})$

4 Stroke/Hundredth of an Inch

※ For Stroke Refer to page A-28

5 Special Option

Blank : Standard
XC16 : Copper-free

6 Applicable Auto Switch

(Band mounted type)

W5 : Reed Switch

※ Standard Lead 0.5m(Up to 3m Optional)

7 Number of Switches

Blank : 2 pcs.

S : 1 pc.

N : (n) pcs.

ACP

UACP

AX

AS

AM

AL
ALX

UARD

UAQ

AJ

AG

UAG

ADM

ADR

AMR

UAMR

AST

W~

Series UACPW

PART No. of Mounting Bracket

Mounting Bracket	Bore size mm(inch)		
	6(1/4 Nom.)	10(3/8 Nom.)	16(5/8 Nom.)
Foot	ACP006-19	ACP010-19	ACP016-19
Flange	ACP006-20	ACP010-20	ACP016-20

PART No. of Auto Switch Mounting Band

Bore Size (inch)	PART No. of auto switch mounting band	Note
6(1/4 Nom.)	ACP006	Common use to all of W5 types
10(3/8 Nom.)	ACP010	
16(5/8 Nom.)	ACP016	

Standard Type/Double Acting: Double Rod/Series UACPW

Specifications

Action	Double Acting Single Rod	
Fluid	Air	
Proof Pressure	150 PSI (1.05MPa)	
Max. Operating Pressure	100 PSI (0.70MPa)	
Min. Operating Pressure	φ6(0.24)	17 PSI (0.12MPa)
	φ10(0.39), φ16(0.63)	8.5 PSI (0.06MPa)
Ambient and Fluid Temperature	40~140 °F (5℃ ~ 60℃)	
Cushion	Rubber Cushion (Standard)	
Lubrication	None (Non-Lube)	
Piston Speed	50~750 mm/sec, (2~29.5 in/sec)	

Auto Switch Specifications

Mounting	Bore Size(inch)	Reed Switch
		Grommet
Band Mounted type	φ6(1/4 Nom.), φ10(3/8 Nom.), φ16(5/8 Nom.)	W5 type

Mounting and Accessories

Mounting		Basic type	Foot type	Flange type
Standard	Mounting nut	●	●	●
	Rod end nut	●	●	●
Option	Single knuckle joint	●	●	●
	Double knuckle joint(with pin)	●	●	●

Standard Stroke

Bore Size (inch)	Standard stroke(inch×100)
φ6(1/4 Nom.)	0050, 0100, 0150, 0200
φ10(3/8 Nom.)	0050, 0100, 0150, 0200
φ16(5/8 Nom.)	0050, 0100, 0150, 0200, 0300, 0400

Weight Table

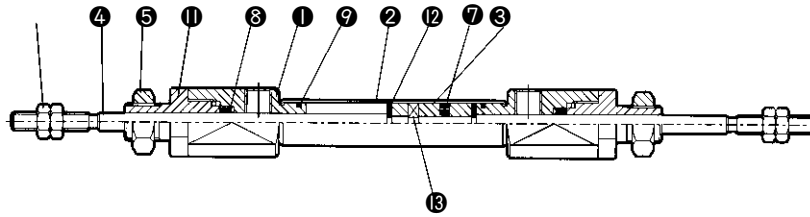
gf(oz)

Bore Size mm(inch)		φ6(1/4 Nom.)	φ10(1/4 Nom.)	φ16(5/8 Nom.)
※Basic Weight		27(0.95)	35(1.23)	70(2.47)
Additional Weight for each 1/2" of stroke		3(0.08)	6(0.17)	9(0.26)
Mounting Bracket Weight	Foot type	14(0.49)	14(0.49)	38(1.34)
	Flange type	5(0.17)	5(0.17)	13(0.46)

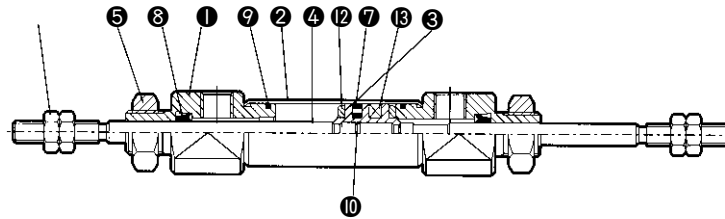
※ Including the weights of mounting nut and rod end nut in the reference weight.

Construction/Parts List

UACPWB 6



UACPWB 10, 16



Parts List

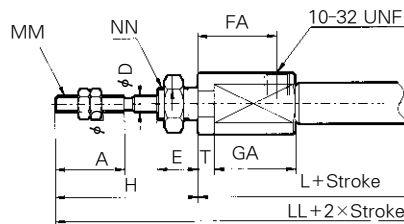
No.	Description	Material	Note
1	Rod Cover	Aluminum Alloy	White Alumite
2	Cylinder Tube	Stainless Steel	
3	Piston	Brass	
4	Piston Rod	Stainless Steel	
5	Mounting Nut	Brass	Nickel Plated
7	Piston Packing	NBR	

No.	Description	Material	Note
8	Rod Packing	NBR	
9	Tube Gasket	NBR	
10	Piston Gasket	NBR	
11	Packing Retainer	Aluminum alloy	
12	Bumper	Urethane	
13	Magnet	-	

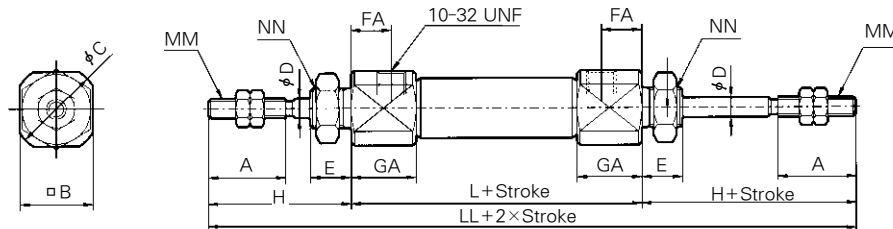
Standard Type (UACPWB)

UACPWB (Bore Size) (Stroke)

UACPWB6
Rod Cover



UACPWB10,16



(inch)

Bore size (inch)	A	B	C	D	E	FA	H	MM	GA	NN	L	T	LL
φ6(1/4 Nom.)	0.59	0.47	0.55	0.12	0.31	0.57	1.10	5-40 UNC	0.63	1/4-28 UNF	2.70	0.12	4.90
φ10(3/8 Nom.)	0.59	0.47	0.55	0.16	0.31	0.32	1.10	6-40 UNF	0.49	5/16-24 UNF	1.89	-	4.09
φ16(5/8 Nom.)	0.59	0.71	0.79	0.20	0.31	0.32	1.10	10-32 UNF	0.49	3/8-24 UNF	1.89	-	4.09

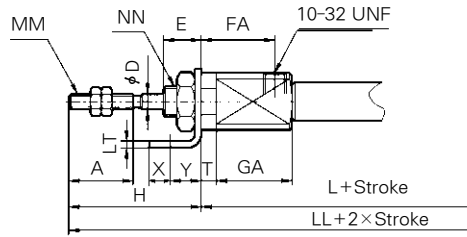
- ACP
- UACP
- AX
- AS
- AM
- AL
- ALX
- UARD
- UAQ
- AJ
- AG
- UAG
- ADM
- ADR
- AMR
- UAMR
- AST
- W~

Series UACPW

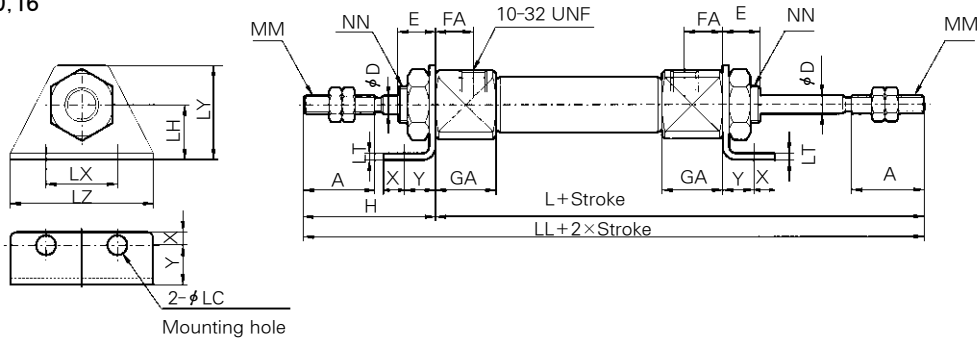
Foot Type (UACPWL)

UACPWL **Bore Size** **Stroke**

UACPWL6
Rod Cover



UACPWL10,16



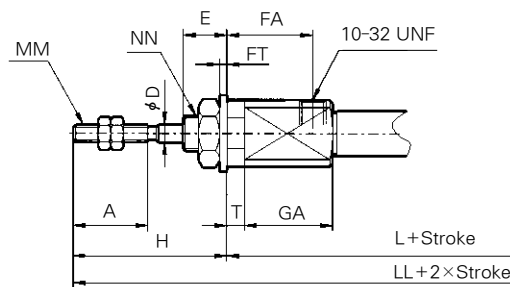
(inch)

Bore size (inch)	A	D	E	FA	H	LC	LH	LT	LX	LY	LZ	MM	GA	NN	L	T	X	Y	LL
φ6(1/4 Nom.)	0.59	0.12	0.31	0.57	1.10	0.18	0.35	0.06	0.95	0.65	1.26	5-40 UNC	0.63	1/4-28 UNF	2.70	0.12	0.20	0.28	4.90
φ10(3/8 Nom.)	0.59	0.16	0.31	0.32	1.10	0.18	0.35	0.06	0.95	0.65	1.26	6-40 UNF	0.49	5/16-24 UNF	1.89	-	0.20	0.28	4.09
φ16(5/8 Nom.)	0.59	0.20	0.31	0.32	1.10	0.22	0.55	0.09	1.30	0.98	1.65	10-32 UNF	0.49	3/8-24 UNF	1.89	-	0.24	0.35	4.09

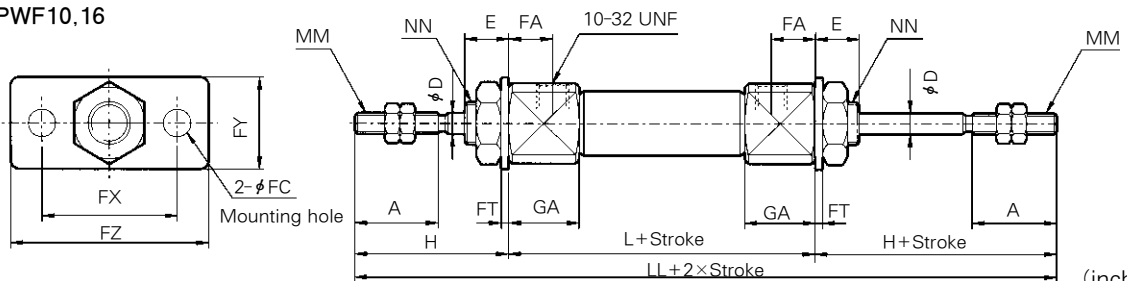
Flange Type (UACPWF)

ACPWF **Bore Size** **Stroke**

UACPWF 6
Rod Cover



UACPWF10,16



(inch)

Bore size (inch)	A	D	E	FC	FT	FX	FY	FZ	FA	H	MM	GA	NN	L	T	LL
6(1/4 Nom.)	0.59	0.12	0.31	0.18	0.06	0.95	0.55	1.26	0.57	1.10	5-40 UNC	0.63	1/4-28 UNF	2.70	0.12	4.90
10(3/8 Nom.)	0.59	0.16	0.31	0.18	0.06	0.95	0.55	1.26	0.32	1.10	6-40 UNF	0.49	5/16-24 UNF	1.89	-	4.09
16(5/8 Nom.)	0.59	0.20	0.31	0.22	0.09	1.30	0.79	1.65	0.32	1.10	10-32 UNF	0.49	3/8-24 UNF	1.89	-	4.09