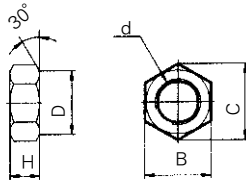


Series AM

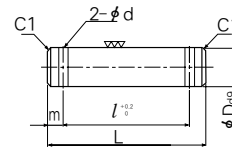
Rod End Nut(Standard accessories)



Material : Rolled steel

Part No.	Applicable bore	d	H	B	C	D
TNT-04	φ 40	M14×1.5	8	22	25.4	21
TNT-05	φ 50 · φ 60	M18×1.5	11	27	31.2	26
TNT-08	φ 80	M22×1.5	13	32	37.0	31
TNT-10	φ 100	M26×1.5	16	41	47.3	39

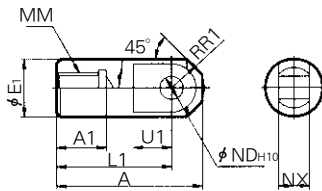
Knuckle Joint Pin/Clevis Pin



Material : Carbon steel

Part No	Bore Size		φ Dd9	L	l	m	φ d	Applicable split pin φ × l
	CLEVIS	KNUCKLE						
TCDP-2	φ 40	—	10 ^{-0.040/-0.076}	45.2	37.2	4	φ 3	φ 3 × 18 l
TCDP-3	φ 50	φ 40 · φ 60	12 ^{-0.050/-0.093}	54.3	46.3	4	φ 3	φ 3 × 18 l
TCDP-4	φ 63	—	16 ^{-0.050/-0.093}	70	60	5	φ 4	φ 4 × 24 l
TCDP-5	—	φ 80	18 ^{-0.040/-0.076}	76	66	5	φ 4	φ 4 × 25 l
TCDP-6	φ 80	φ 100	20 ^{-0.065/-0.117}	82	72	5	φ 4	φ 4 × 36 l
TCDP-7	φ 100	—	25 ^{-0.065/-0.117}	87.5	77.5	5	φ 4	φ 4 × 36 l

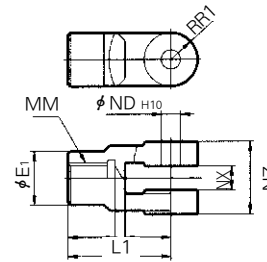
I Type Single Knuckle Joint



Material : Free cutting sulfur steel

Part No.	Applicable bore	A	A1	φ E1	L1	MM	R1	U1	φ ND _{H10}	NX
TI-04	φ 40	69	22	24	55	M14×1.5	15.5	20	12	16 ^{-0.1/-0.3}
TI-05	φ 50 · φ 63	74	27	28	60	M18×1.5	15.5	20	12	16 ^{-0.1/-0.3}
TI-08	φ 80	91	37	36	71	M22×1.5	22.5	26	18	28 ^{-0.1/-0.3}
TI-10	φ 100	105	37	40	83	M26×1.5	24.5	28	20	30 ^{-0.1/-0.3}

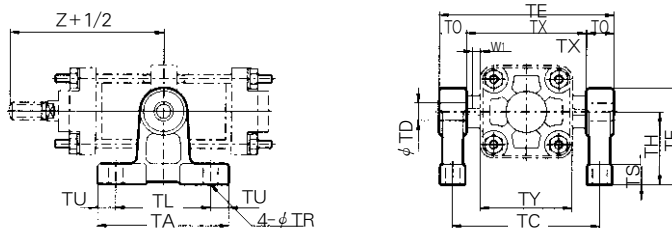
Y Type Double Knuckle Joint



Material : Cast iron

Part No.	Applicable bore	A1	φ E1	L1	MM	R1	U1	φ ND _{H10}	NX	NZ
TY-04A	φ 40	22	24	55	M14×1.5	13	25	12	16 ^{+0.3/+0.1}	38
TY-05A	φ 50 · φ 63	27	28	60	M18×1.5	15	27	12	16 ^{+0.3/+0.1}	38
TY-08A	φ 80	37	36	71	M22×1.5	19	28	18	28 ^{+0.3/+0.1}	55
TY-10A	φ 100	37	40	83	M26×1.5	21	38	20	30 ^{+0.3/+0.1}	61

Trunnion Bracket



Part No.	Applicable bore	TA	TL	TU	TC	TX	TE	TO	φ TR	φ TT	TS	TH	TF	TY	W1	Z	φ TD-H10
TCA2-S04	φ 40	80	60	10	102	85	119	17	9	17	12	45	60	62	10	93	15 ^{+0.070/0}
	φ 50	80	60	10	112	95	129	17	9	17	12	45	60	74	10	103	15 ^{+0.070/0}
TCA2-S06	φ 63	100	70	15	130	110	150	20	11	22	14	55	73	90	10	107	18 ^{+0.070/0}
TCA2-S08	φ 80	120	90	15	166	140	192	26	13.5	24	17	75	100	110	12	129	25 ^{+0.084/0}
	φ 100	120	90	15	188	162	214	26	13.5	24	17	75	100	130	12	135	25 ^{+0.084/0}