

Series **USF**

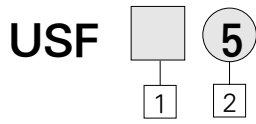
Floating Joint



Accurate Cylinder Alignment not Required
 Installation Time Reduced
 Accurate Machining
 Compact design Allows High Loading

- SQ
- SP
- SPM
- ST
- SN
- SF
- USF**
- TPC

How to Order



- 1 Mounting**
 Blank : Standard
 F : Flange Type

- 2 Thread Size**
 1 : 6-40 UNF
 2 : 10-32 UNF
 4 : 1/4-28 UNF
 5 : 5/16-24 UNF
 6 : 3/8-24 UNF
 7 : 7/16-20 UNF
 8 : 6-40 UNF
 12 : 3/4-16 UNF
 16 : 1-12 UNF
 20 : 1 1/4-12 UNF

Specifications

Operating Pressure	Air cylinder 140psi(990kPa)
	Hydraulic cylinder 498psi(3.5MPa)
Mounting	Standard, Flange type

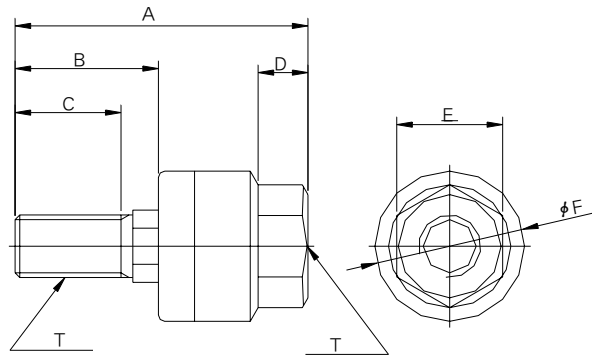
Model

Model	Thread	Working thrust N(kgf)	Angle
USF1	6-40UNC	5.4	±5°
USF2	10-32UNF	12.3	
USF4	1/4-28UNF	110	
USF5	5/16-24UNF	110	
USF6	3/8-24UNF	250	
USF7	7/16-20UNF	600	
USF8	1/2-20UNF	1100	
USF12	3/4-16UNF	1800	
USF16	1-12UNF	2800	
USF20	1 1/4-12UNF	5400	

Series USF

Basic Type/Series USF

USF1 ~USF20

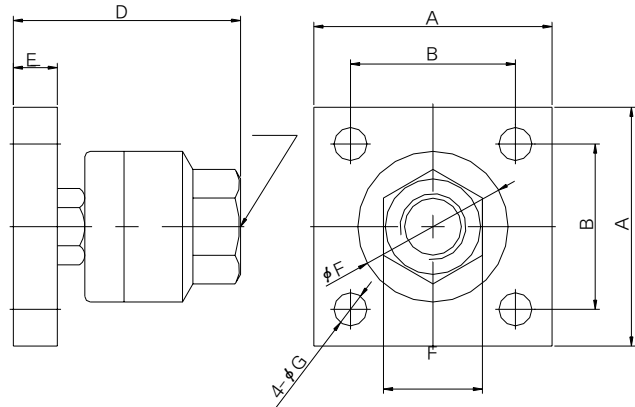
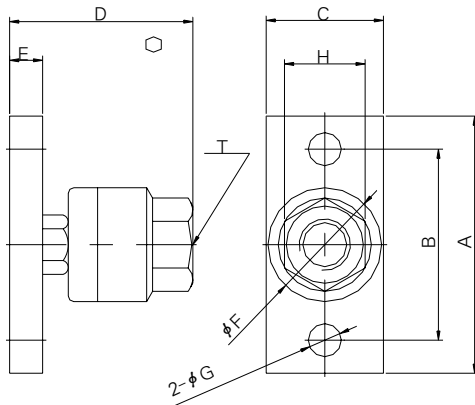


(inch)

Model	T	A	B	C	D	E	F
USF1	6-40UNC	1.02	0.45	0.35	0.22	0.28	0.47
USF2	10-32UNF	1.36	0.63	0.49	0.28	0.39	0.63
USF4	1/4-28UNF	1.77	0.85	0.59	0.31	0.51	0.83
USF5	5/16-24UNF	1.77	0.85	0.59	0.31	0.51	0.83
USF6	3/8-24UNF	1.95	0.91	0.669	0.35	0.67	0.94
USF7	7/16-20UNF	2.44	1.11	0.79	0.51	0.87	1.22
USF8	1/2-20UNF	2.95	1.28	0.98	0.59	1.06	1.61
USF12	3/4-16UNF	3.50	1.47	1.06	0.71	1.26	1.97
USF16	1-12UNF	4.33	1.85	1.34	0.94	1.61	2.32
USF20	1 1/4-12UNF	6.02	2.36	1.65	1.50	1.81	3.11

USFF4 ~USFF7

USFF8 ~USFF20



(inch)

Model	T	A	B	C	D	E	F	G	H
USF4	1/4-28UNF	1.89	1.42	0.75	1.29	0.24	0.83	0.26	0.51
USF5	5/16-24UNF	1.89	1.42	0.75	1.29	0.24	0.83	0.26	0.51
USF6	3/8-24UNF	2.05	1.57	0.98	1.41	0.24	0.94	0.26	0.67
USF7	7/16-20UNF	2.76	2.05	1.26	1.96	0.35	1.22	0.35	0.87
USF8	1/2-20UNF	2.56	1.77	-	2.44	0.47	1.61	0.43	1.06
USF12	3/4-16UNF	2.95	2.17	-	3.01	0.63	1.97	0.43	1.26
USF16	1-12UNF	3.54	2.56	-	3.70	0.75	2.74	0.71	1.61
USF20	1 1/4-12UNF	4.92	3.23	-	5.19	0.94	3.11	0.51	1.81