

## LED indicators for plastic housings



### IP60

LED indicators for front panel mounting in plastic housing – IP60 protection.

Page 3.15.2



### IP65

LED indicators for front panel mounting in plastic housing – IP65 protection.

Page 3.15.2

## LED indicators for metal housings



### IP40

LED indicators for front panel mounting in metal housing – IP40 protection.

Page 3.15.3

## LED indicators for front panel mounting

**LED**  
Plastic housing



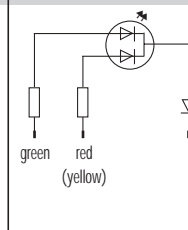
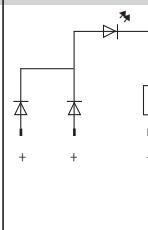
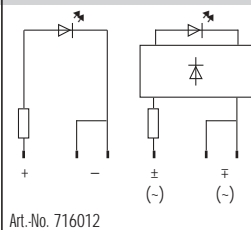
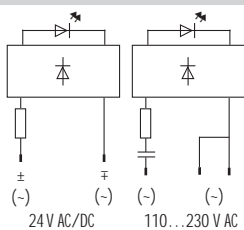
**LED**  
Plastic housing



**LED**  
Plastic housing  
with lamp test input

**LED 2F**  
2 color LED  
in plastic housing

### Circuit diagram



### Ordering data

| Ordering data |              | Art.-No. | Art.-No. | Art.-No. | Art.-No. |
|---------------|--------------|----------|----------|----------|----------|
| Voltage       | LED color    |          |          |          |          |
|               | 24 V         | red      | 71001    | 71261    | 71361    |
|               |              | yellow   | 71021    | 71271    | 71371    |
|               |              | green    | 71041    | 71281    | 71381    |
|               |              | blue     |          | 24 V DC  | 716012   |
|               | red/green    |          |          |          | 71250    |
|               | yellow/green |          |          |          | 71255    |
| 110 V         | red          | 71007    | 71267    |          |          |
|               | yellow       | 71027    | 71277    |          |          |
|               | green        | 71047    | 71287    |          |          |
| 230 V         | red          | 71007    | 71269    |          |          |
|               | yellow       | 71027    | 71279    |          |          |
|               | green        | 71047    | 71289    |          |          |
|               | blue         |          | 716015   |          |          |

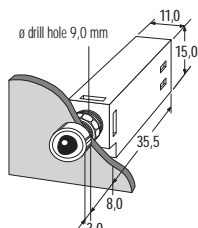
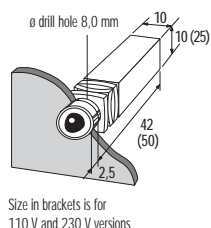
### Technical data

|                                  |                         |       |                         |       |         |       |         |       |
|----------------------------------|-------------------------|-------|-------------------------|-------|---------|-------|---------|-------|
| Voltage                          | 24 V AC/DC              | ±15 % | 24 V AC/DC              | ±15 % | 24 V DC | ±15 % | 24 V DC | ±15 % |
|                                  | 110 V AC                | ±15 % | 110 V AC/DC             | ±15 % | -       | -     | -       | -     |
|                                  | 230 V AC                | ±10 % | 230 V AC                | ±10 % | -       | -     | -       | -     |
| Current usage                    | 10 mA each LED          |       | 10 mA each LED          |       |         |       |         |       |
| LED                              | ∅ 5 mm                  |       | ∅ 5 mm                  |       |         |       |         |       |
| Connection                       | Faston 2,8 x 0,8 mm     |       | Faston 2,8 x 0,8 mm     |       |         |       |         |       |
| Protection to IEC529 (DIN 40050) | IP60                    |       | IP65                    |       |         |       |         |       |
| Temperature range                | -20...+50 °C            |       | -20...+50 °C            |       |         |       |         |       |
| Housing                          | flame retardant plastic |       | flame retardant plastic |       |         |       |         |       |

### Accessories

| Accessories                  | Art.-No. |
|------------------------------|----------|
| Mounting key for plastic nut | 71998    |
| Metal front nut              | 71991    |
| Blind plug                   | 71995    |

### Assembly/Dimension drawing



### Notes

LED indicators to IP65 are with opaque LEDs (milk white).  
The LED modules are suitable for wall thickness between 1,5 and 5,0 mm

## LED indicators for front panel mounting

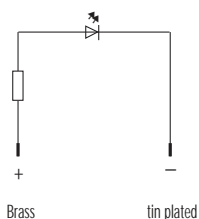
### LED 3 M Metal housing

### LED 5 M Metal housing

### LED 10 M Metal housing



#### Circuit diagram

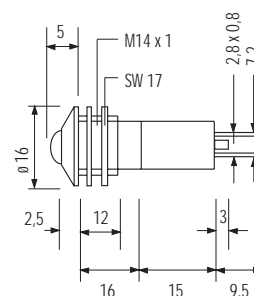
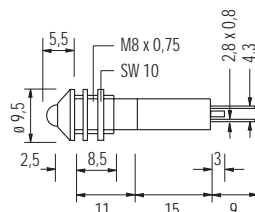
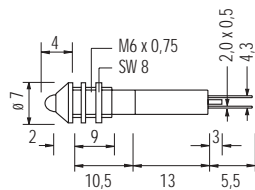


| Ordering data  |               | Art.-No. | Art.-No. | Art.-No. |
|----------------|---------------|----------|----------|----------|
| Voltage        | LED color     |          |          |          |
| 24 V DC ± 10 % | red Ø 3 mm    | 71403    |          |          |
|                | yellow Ø 3 mm | 71423    |          |          |
|                | green Ø 3 mm  | 71443    |          |          |
| 24 V DC ± 10 % | red Ø 5 mm    |          | 71405    |          |
|                | yellow Ø 5 mm |          | 71425    |          |
|                | green Ø 5 mm  |          | 71445    |          |
| 24 V DC ± 10 % | red Ø10 mm    |          |          | 71410    |
|                | yellow Ø10 mm |          |          | 71430    |
|                | green Ø10 mm  |          |          | 71450    |

#### Technical data

|                                   |                      |                     |              |
|-----------------------------------|----------------------|---------------------|--------------|
| Current usage                     | 20 mA each LED       |                     |              |
| LED                               | Ø 3 mm               | Ø 5 mm              | Ø 10 mm      |
| Connection                        | Faston 2,0 x 0,5 mm  | Faston 2,8 x 0,8 mm |              |
| Protection to IEC 529 (DIN 40050) | IP40                 |                     |              |
| Temperature range                 | -30...+70 °C         |                     |              |
| Housing                           | Brass, chrome plated |                     |              |
| Dimensions                        | Ø 7 x 33 mm          | Ø 9,5 x 40 mm       | Ø 16 x 45 mm |
| Front panel hole diameter         | Ø 6 mm               | Ø 8 mm              | Ø 14 mm      |

#### Dimension drawing



| Accessories                              | Art.-No. | Art.-No. | Art.-No. |
|--|----------|----------|----------|
| Mounting adapter for diameter of 22.5 mm | 71490    | 71491    | 71492    |

#### Notes

+ Connection Brass, - connection tin plated