

# ICS Intersection Cross-traffic System...

...to protect your employees and assets

## Facts

- Approximately every 3 days, someone in the US is killed in a forklift related accident (BLS)
- Almost 80% of forklift accidents involve a pedestrian
- 18.8% of forklift accidents occur when a forklift strikes a pedestrian
- Each year, an additional 94,750 injuries related to forklift accidents are reported
- One in six of all workplace fatalities in this country are forklift related
- \$135,000,000 immediate costs incurred due to forklift accidents
- According to OSHA, approximately 70% of all accidents reported could have been avoided with proper safety

## Description

The **ICS** from Bircher America Inc. increases plant safety by alerting pedestrians when forklift traffic is approaching, creating safer walkways and positive work environments.

The **ICS** also assists forklift drivers to locate intersections, allowing them to reduce speed and take precautions when entering the safety zone. The system can sense vehicles separately from pedestrians in busy aisle ways, between narrow rack aisles and can be customized to address specific areas of concern.

### Multiple Alarms

- Strobe lighted signs
- 26" mirrored dome
- Audible alarm self adjusting to environmental noise

### Versatility

- Senses vehicles up to 80' away
- Protects 1 to 4 aisles per system
- Senses vehicles separately from pedestrians

### Minimal Installation

- Self contained system
- 120 volt / 15 amp / single phase power

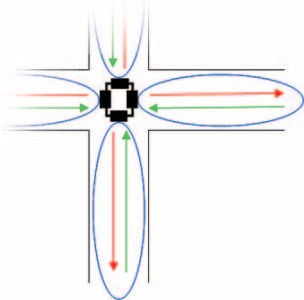


## Functionality

OSHA recognizes hazards with powered industrial forklifts.

One of the most useful pieces of equipment in today's plant environment can be one of the most dangerous. Every day workers are injured when forklifts overturn, lose materials and strike pedestrians. Although OSHA's powered industrial forklift training has helped to reduce accidents, it does not guarantee pedestrian awareness in intersections. The **ICS** helps to reduce the incidences of forklift collisions with plant employees.

When used in conjunction with an overall forklift safety program, the **ICS** can help reduce management costs without relying solely on forklift operators, supervisors and pedestrians.



The Intersection **Cross-traffic System** from Bircher America Inc. was developed to address the daily hazards of people working with and around powered industrial forklifts. The **ICS** is typically installed over busy facility forklift intersections that also include pedestrian crossings. The **ICS's** microwave sensors detect only vehicle traffic in the sensing area. Once detected, the controls lock in as long as the forklift is moving toward the center of the intersection. The audible and visual alarms are engaged until the vehicle has fully passed through the intersection. The system automatically resets and awaits the next forklift.

As a result, pedestrians and other forklifts are alerted to oncoming traffic so they can react in a timely manner and avoid contact with the moving forklifts and its load.

- microwave sensor field
- driving direction detected vehicle
- driving direction undetected vehicle

## Accessories

- The Reglobeam remote control unit allows you to program the Herkules easily and conveniently from floor level. Data transfer between the Reglobeam and the Herkules takes place in both directions and are displayed so that they can be checked.
- Additional alerts can be interconnected to the main system, expanding the safety zone. At this time we offer a smaller illuminated sign with a forklift or a pedestrian.
- The Merkur Microwave sensor unit allows detecting pedestrians and warning i.e. forklift drivers of people coming out of a door into an aisle where forklifts are working.



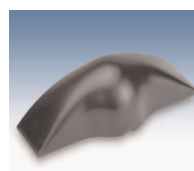
small sign forklift



small sign pedestrian



vehicle sensor



pedestrian sensor



remote control

# ICS Intersection Cross-traffic System...

## Technical data

Intersection Cross-traffic System		
<b>Alert</b>	<ul style="list-style-type: none"> <li>• 8.7 millions candlepower strobe</li> <li>• 26", 360° mirrored dome</li> <li>• audible self adjusting horn</li> </ul>	
<b>Weight</b>	ICS: 65 lbs.(29.5 kg). Sensor: 1.587 lb (720 g) incl. cable	
<b>Material</b>	ICS: Metal/PVC	Color white
	Sensor: Aluminum housing	Color black
<b>Dimensions</b>	ICS: 45"x45"x32" tall (1143x1143x813 mm) W x H x D Sensor: 5.28"x3.23"x2.95" (134x82x75 mm)	
<b>Max. Range</b>	80ft (25 m)	At 14.75 ft (4.5 m) height and max. field dimension
<b>Mounting height</b>	8.2' - 23.0' (2.5 m to 7 m)	
<b>Operating voltage</b>	ICS: 120V/3A Sensor: 12–28 VAC, 12–36 VDC / 110 mA At 24 V AC and 20°C (68°F)	
<b>Protection class</b>	ICS: n/a Sensor: suitable for use in acc. with IP 65	
<b>Operating temperature</b>	ICS: -4 °F to 120 °F (-20°C to +49°C) Sensor: -4 °F to 140 °F (-20°C to +60°C)	
<b>Humidity</b>	ICS: n/a Sensor: 0% to 95% relative humidity, without condensation	
<b>Outputs</b>	2 potential-free changeover contacts for Max. switching voltage 48 V AC/DC separation of: Max. switching current 0.5 A AC / 1.0 A DC <ul style="list-style-type: none"> <li>• People/vehicles Max. switching capacity 55 VA / 24Wohmic load</li> <li>• Direction recognition</li> </ul>	
<b>Detection speeds</b>	Max. 25 km/h (15 mph) for vehicles	
<b>Response Time</b>	< 100 ms	ICS: patent pending
<b>Approvals</b>	Sensor: CE 0682	FCC pending
<b>Mounting</b>	The ICS is suspended from chains or appropriate bracketing capable of supporting a minimum of 100 lbs. (not included).	

## Ordering Information

P/N	Description	Name	P/N	Description (Accessories)	Name
BIAM.ICS-1	Intersection Cross-traffic System (one sensor/aisle)	ICS-1	F531.31710	vehicle sensor	Herkules
BIAM.ICS-2	Intersection Cross-traffic System (two sensors/aisle)	ICS-2	F539.89420	remote control	Reglobeam
BIAM.ICS-3	Intersection Cross-traffic System (three sensors/aisle)	ICS-3	F531.11300	pedestrian sensor	Merkur
BIAM.ICS-4	Intersection Cross-traffic System (four sensors/aisle)	ICS-4	BIAM.ssf1	small sign forklift	ICS-5
			BIAM.ssp2	small sign pedestrian	ICS-6

## Your contact

<p><b>Bircher America Inc.</b>                  909 E. Oakton Street                  Elk Grove Village, IL 60007                  Phone (847) 952 3730                  Toll Free (800) 252 1272                  Fax (847) 952 2005                  info@bircheramerica.com                  www.bircheramerica.com</p>
--

**Note**  
 Technical details and recommendations concerning our products are based on experience and are intended as an aid for the user. Details stated in our brochures and data sheets do not guarantee special properties of the products. This does not apply to special product properties confirmed in writing or individually. Subject to technical alterations.